

DISCOVER AWC



The background features a bold, geometric design. On the left, there are diagonal stripes in red and cyan. The right side is a solid black field. Three decorative elements, each a 4x4 grid of white dots, are positioned at the top left, top right, and bottom left.

WELCOME

AGENDA:

- AWC Majors (Degrees & Certificates) and General Education Requirements
- Selecting a Pathway/Major and working with your advisor.
- Strategies and tips on how to choose classes and build a schedule.
- Ideas and resources to be a successful college student.
- Register for classes.





High School

Learn in class, practice at home

Community College

- 2 year associate degrees and certificates
- Lower tuition prices
- Smaller class sizes

vs

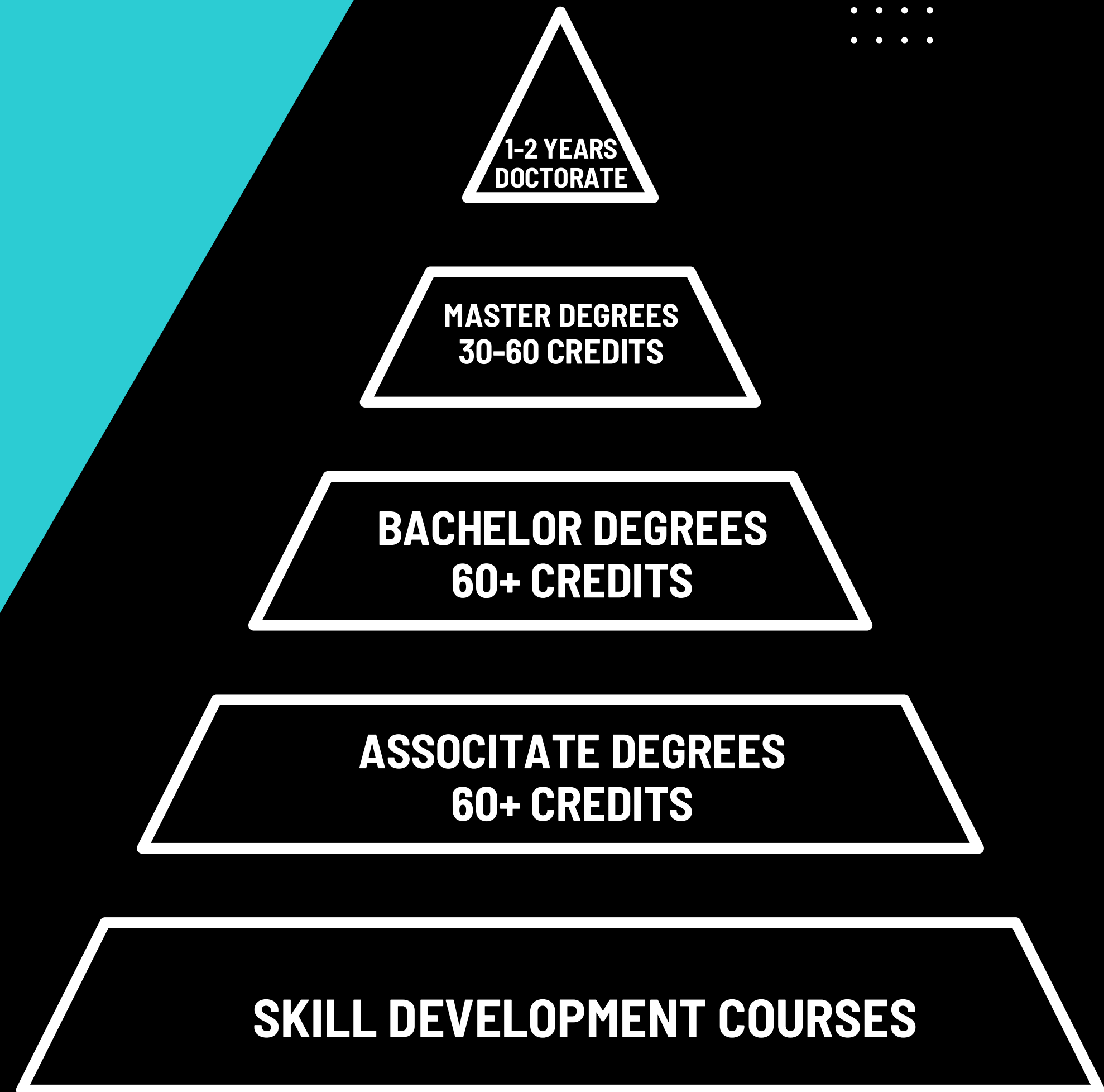
College

Learn at home, practice in class

University

- 4 year bachelor's degrees, as well as master's and doctoral programs.
- Higher tuition prices
- Larger lecture-style classes

HIGHER EDUCATION PYRAMID



WHAT'S YOUR MAJOR?



Career Exploration

- Discover career, academic and personal interests
- Explore career and academic options
- Create your college experience
- Prepare a career path



- AWC Majors (Degrees & Certificates) and General Education Requirements
- Selecting a Pathway/Major and working with your advisor.
- Strategies and tips on how to choose classes and build a schedule.
- Ideas and resources to be a successful college student.
- Register for classes.





**ARIZONA
WESTERN
COLLEGE**









*Make every
credit count!*

Visit aztransfer.com to see how your AWC credits transfer to all universities in Arizona.



AREAS OF STUDY (PATHWAYS)

- Program Pathways are organized by common areas, also known as Areas of Study or Career Clusters.
- Allows students to choose an area of study that contains common requirements.
- Common requirements allow students to complete credits that would apply to most programs in each Area of Study.
- Ideal for students who are undecided about a specific major but have a general idea of what direction they want to take.
- Program Maps with specific course recommendations and sequence will be available soon!

Fields of Interest	Programs (A-Z)	Degrees & Certificates
Fields of Interest Find your field of interest.		
 ARTS, HUMANITIES, SOCIAL & BEHAVIORAL SCIENCES Step into the world of the arts, explore different languages, or gain a better understanding of how to serve your community.	 BUSINESS & COMPUTER INFORMATION SYSTEMS Acquire the essential skills necessary to pursue a career in business, accounting, IT, informatics, video game design, and beyond.	 EDUCATION Help students reach their full potential and unlock a love for learning through a career in the field of education.
 HEALTHCARE & PUBLIC SAFETY Help improve the quality of life for those in your community through a rewarding career in nursing, fire science, law enforcement, and more.	 SCIENCE, ENGINEERING, AGRICULTURE, & MATH Make an impact on our world by tackling challenges and discovering creative solutions within the field of agriculture, engineering, environmental sciences, and beyond.	 TECHNOLOGY, TRADES, & FOOD SCIENCES Get the hands-on experience you need to prepare for a career in industrial technology, manufacturing, welding, culinary arts, and more.



OVER **170+** DEGREES AND CERTIFICATES

TRANSFER DEGREES

Associate of Arts (AA)
Associate of Science (AS)
Associate of Business (A.bus)

OCCUPATIONAL DEGREES

Associate of Applied Science (A.A.S.)
Associate in General Studies (A.G.S.)

OCCUPATIONAL CERTIFICATES

AGEC CERTIFICATE



AWC Professional/Occupational Programs that require an application and acceptance before beginning their program:

- Law Enforcement Academy
- EMT/EMS Paramedic
- Registered Nurse
- Radiology
- Fire Academy
- Phlebotomy
- Certified Nursing Assistant

INSTRUCTION MODES

IN PERSON

Students meet on campus for class in-person.

ZOOM

Students will meet with instructor via Zoom at scheduled times each week.

ONLINE

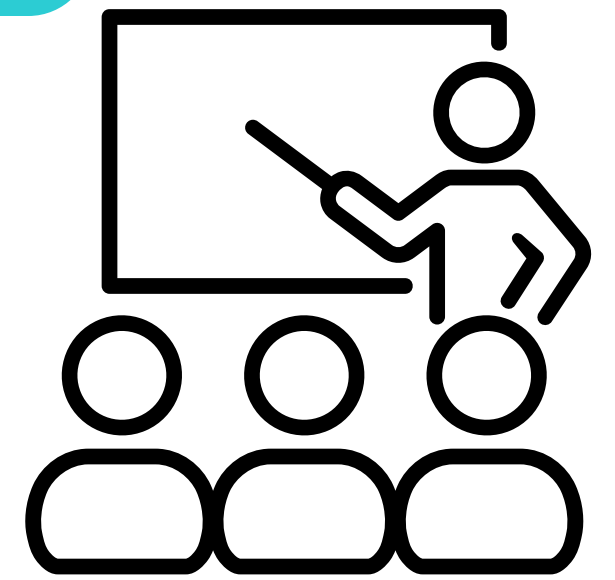
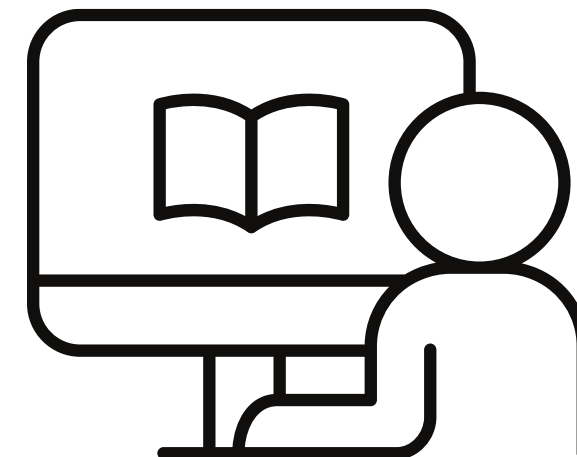
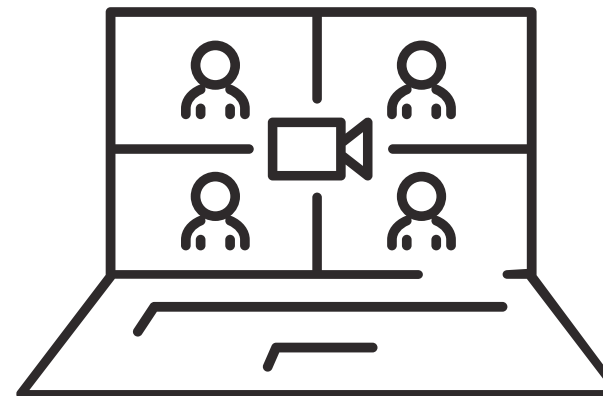
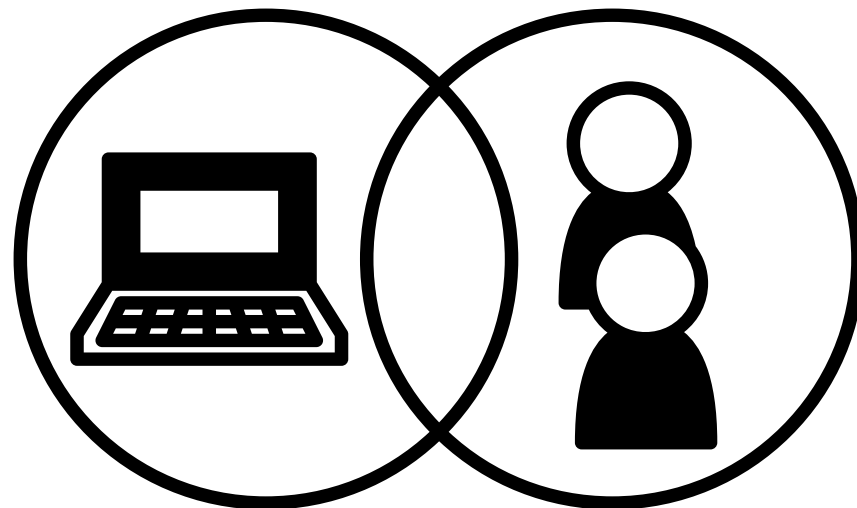
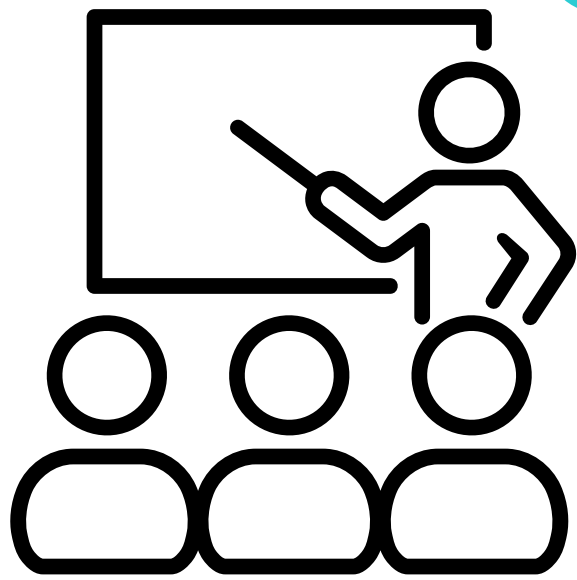
Students will complete coursework 100% online via Canvas.

LINKED

Students meet on campus for class in-person with instructor in one classroom teaching to all students in classrooms at various campus locations.

HYBRID

Students meet a minimum 50% of the time in person at scheduled times each week, and the remaining class time is online via Canvas.



Major Courses

General Education Courses (AGEC)

Electives

See your specific program check-sheet on Self-Service
or

www.azwestern.edu/programs

2024-2025 ASSOCIATE IN ARTS (A.A) AWC ADVISEMENT CHECK SHEET

To help you decide upon which courses to include in both the major and elective blocks, you and your advisor should consult university requirements (aztransfer.com) for specific required and recommended courses. Sign in to your [Self-Service Student Planning](#) account to load the recommended program map and to track your academic progress.

FAMILY SCIENCES			
Student Name	ID #	Advisor	Major Code: AA.FAS Credits: 64

This program strives to integrate relationships between individuals, families, and communities as well as the environments in which they function. This profession is concerned with: the strength and vitality of families; the use of personal, social, and material resources to meet human needs; the well-being of individuals and families; the role of individuals and families as consumers of goods and services; and the development and management of home and community environments that are supportive of individuals and families.

Required Major Courses (12 Credits)		Cr	Sem	Notes
ECE 240	Child Growth and Development	3		
FAS 160	Close Relationships	3		
FAS 238	Human Development	3		
NTR 201	Nutrition	3		

NTR 201 prerequisite: High school chemistry or BIO 100 or CHM 130

Other Departmental Requirements (9 Credits)		Cr	Sem	Notes
FAS 101	Family Culture & Structure	3		
FAS 204	Gender Relations	3		
PSY 170	Human Sexuality	3		

Arizona General Education Curriculum - AGECA (35 Credits)

See the AGECA course list in the current catalog for selection of courses.

English Composition (6 credits)		Cr	Sem	Notes
ENG 101 or 107	Freshman Composition	3		
ENG 102 or 108	Freshman Composition	3		

Mathematics (3 credits)		Cr	Sem	Notes
MAT 142	College Mathematics with Applications OR approved higher level math	3		

Arts/Humanities - Select at least one course from the Arts list and one course from the Humanities list. (6 credits)

Arts:				
Humanities:				

Social and Behavioral Sciences (6 credits)		Cr	Sem	Notes

Physical and Biological Sciences (8 credits)		Cr	Sem	Notes

Additional Courses (6 credits)		Cr	Sem	Notes

General Electives (7 credits)		Cr	Sem	Notes
PSY 230	Statistics for Social Sciences (required for ASU and UA 4 year programs)	4		
PSY 290	Introduction to Research Methods in the Social Sciences (required for ASU and UA 4 year programs)	4		

*Dual Application of Courses is the sharing of coursework between the AGECA and major or program requirements which allows the student to meet both requirements with a single course. Students must still meet the required number of credits to satisfy the program or degree.

List any courses used to satisfy program or degree credits due to dual application and or courses that satisfy the Cultural (C) and Global (G) or Historical (H), or Writing Intensive (WI) awareness areas.

	Dual App
	Dual App
	C or G
	H
	WI

ARIZONA GENERAL EDUCATION CURRICULUM (AGEC)

TRANSFER DEGREES

Written Communication (6 credits)

Oral Communication (3-4 credits)

Arts & Humanities (6-9 credits)

Quantitative Reasoning (3-4 credits)

Natural sciences (4-8 credits)

Social & Behavioral Sciences (6-9 credits)

Institutions of the Americas (3 credits)

OCCUPATIONAL DEGREES

Written Communication (3 credits)

Oral Communication (3-4 credits)

Arts & Humanities (3 credits)

Quantitative Reasoning (3 credits)

Natural sciences (4 credits)

Social & Behavioral Sciences (3 credits)

Institutions of the Americas (3 credits)

GUIDED SELF PLACEMENT

Guided Self-Placement

The ACCUPLACER Placement Testing will no longer be required for placement into most course(s). Please refer to the placement pages below for guidance on selecting the suitable English, Math, or ESL courses.

NOTICE: New AWC **applicants** should wait **24 hours** after creating their AWC account before accessing the platform. Applicants must complete the self-placement process within **30 days** of applying; otherwise, they must already be an **active student** to proceed.

If you're using a shared or public computer, please remember to log out and clear your browser history after each session. For the best experience, we recommend completing self-placement on your personal device.



Math Placement

Please utilize the **Guided Self-Placement guide** to help determine the appropriate Math course(s) for you at Arizona Western College.

MATH GUIDED COURSE PLACEMENT



English Placement

Please fill out the **Guided Self-Placement tool** (requires login) to assist you in choosing the appropriate English course(s) at Arizona Western College.

ENGLISH GUIDED COURSE PLACEMENT
(Requires Login)



ESL Placement

Select either English or Spanish and fill out the **ESL Guided Course Placement** (requires login) to assist you in choosing the appropriate ESL course(s) at Arizona Western College.

ESL GUIDED COURSE PLACEMENT
(Requires Login)

UNIVERSITY PARTNERSHIPS



Booklet page 9 for list of
programs offered in Yuma

STUDENT FINANCIAL AID RESPONSIBILITIES

Check your “Self-Service” account for updates and communication from Financial Aid.

Enroll only for those classes that apply to the declared program of study.

Maintain satisfactory academic progress each semester.

- 2.0 minimum cumulative grade point average (GPA)
- Cumulative [completion rate](#) of at least 67%
- Total Completed (finished) Credits
- Total Attempted (started) Credits
- Maximum number of overall/cumulative credits does not exceed 150% of the credits necessary to complete the degree (generally 96 credits).

To maintain Satisfactory Academic Progress, students must not:

- Completely withdraw from all classes
- Receive grades of all “NS” and/or “F”

Students will have to repay a part or the entire financial award for classes not attended, dropped, withdrawn or cancelled.

BENJI IS A FINANCIAL AID DIGITAL ASSISTANT TO HELP STUDENTS WITH ANY QUESTIONS ABOUT THE FAFSA. STUDENTS CAN TEXT 602-786-8187 TO ASK QUESTIONS OR VISIT ASKBENJI.ORG.



TERMINOLOGY

**CREDIT
HOUR**

**DROPPING
VS.
WITHDRAWING**

**PREREQUISITES
AND
COREQUISITES**

**FALL/SPRING
SEMESTER
WINTER/SUMMER
SESSIONS**

**CATALOG
YEAR**

**FAMILY EDUCATIONAL
RIGHTS AND PRIVACY
ACT (FERPA)**



PLANNING FOR SUCCESS

ACADEMICS

- Talk to your instructors
- Go to the Student Success Center (tutoring) early.
- Manage your time.
- Read your textbook.
- Create 2-year plan with your advisor.

RESOURCES

- Take advantage of all resources at AWC.
- Get involved in a group or club.
- Go to a Matador sports event.
- Start on your career now.
- Jobs4Matadors
- The Cubby (food pantry and closet)

Creating YOUR Schedule

Full-time or Part-time

15+ to finish in two years

Back to back classes vs spread out over the day

Create a realistic schedule

Balance Obligations (work, family, friends, church, etc)

Study Time (1 cr hr = 2 hrs study)

Take a course in your area of study.

THINGS TO CONSIDER...

"C" OR BETTER GRADES FOR
GRADUATION
OR TRANSFER

"NO SHOW"

DROP/ADD WEEK AND LAST
DAY TO WITHDRAW

"TAKE CARE OF YOUR GPA"

IN PERSON VS ONLINE
CLASSES

NET ID INFORMATION

ARIZONA WESTERN COLLEGE

Sign in

first.last@stu.azwestern.edu OR netid@toro.azweste

No account? [Create one!](#)

[Can't access your account?](#)

Back

Next


For all of the latest info on our response to COVID-19
please visit <https://www.azwestern.edu/COVID>


 Office 365




Laptop Rental Program

AWC Alert System

 Email / Office 365

 Canvas

 Self-Service

Orientation

All new AWC students need to attend an orientation session. You'll need an active student account before signing up.

GET STARTED

Yuma Campus Advisement

Available Services:

Academic Advising
Virtual Academic Advising
Email/Phone-Academic Advising
Concurrent Enrollment
AWC 2 NAU
Student Athlete

BOOK NOW

Career Services

Available Services:

Job Search/Internship
Résumé/Cover Letter Assistance
Andale's Apparel-Yuma

BOOK NOW

Military and Veterans Advisement

Available Services:

Veterans - Academic Advising
MCAS - Academic Advising

BOOK NOW

La Paz Advisement

Available Services:

Parker Campus - Academic Advising

BOOK NOW

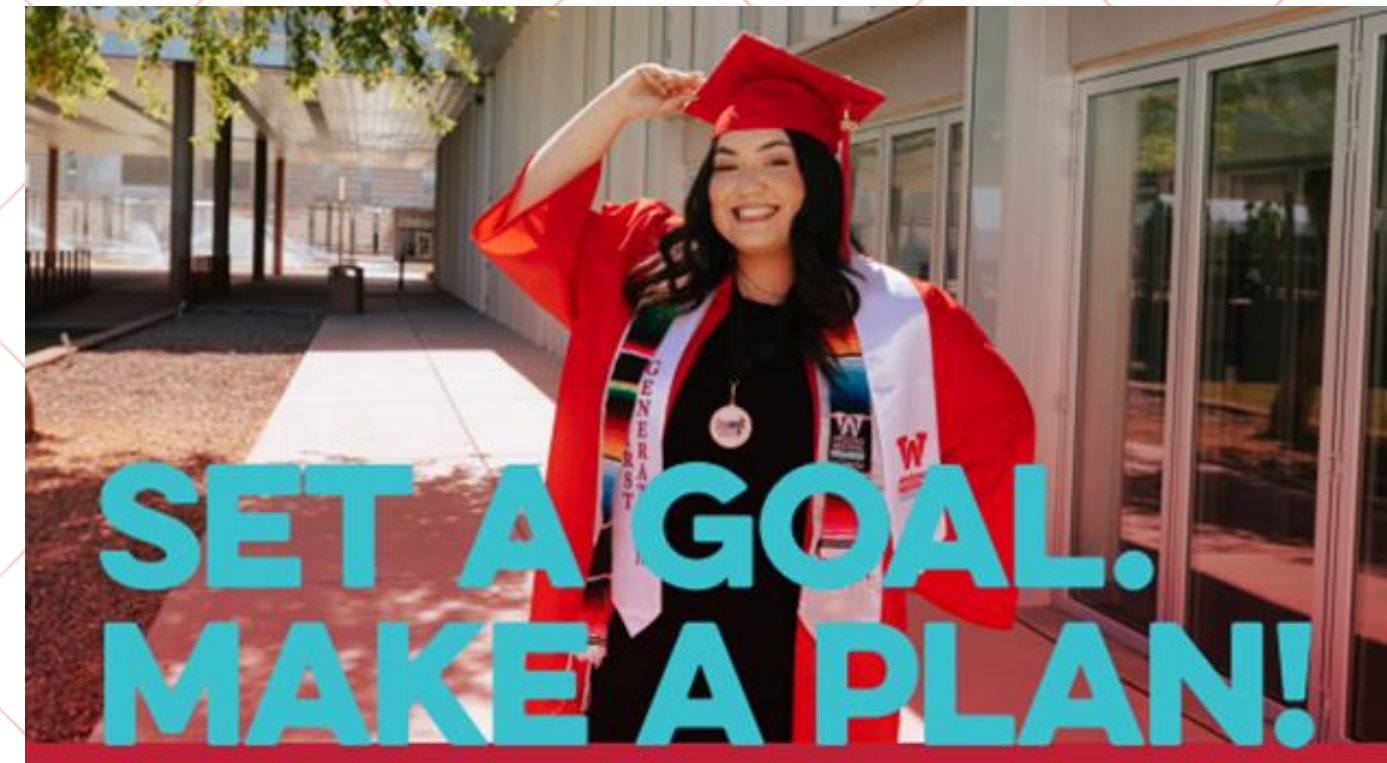
South Yuma County Advisement

Available Services:

San Luis Campus - Academic Advising
Somerton Campus - Academic Advising

BOOK NOW


azwestern.edu/advising



STUDENT PLANNING

STUDENT PLANNING TUTORIALS:

- [INTRODUCTION TO STUDENT PLANNING](#)
- [STUDENT PLANNING-PLAN YOUR COURSES](#)
- [STUDENT PLANNING-REGISTER FOR CLASSES](#)
- [REQUEST A PROGRAM REVIEW](#)

 **Self-Service**


Sign In


User name


Forgot your [user name](#)

[Continue](#)


Student Video Tutorials

[Introduction to Student Planning](#) 


[Student Planning—Plan Your Courses](#) 


[Student Planning—Register for Classes](#) 


Student Tutorials


[Student Planning Student Manual](#) 

Helpful Links

[ToroWeb](#) 

[Bookstore](#) 

[Transcript Request \(NSC\)](#) 

[Search for Courses](#) 

NEXT STEPS

- ☐ Continue the adventure

- ☐ Explore AWC campus

- ☐ Explore AWC on Canvas

- ☐ Explore career options

- ☐ Plan your Courses via Student Planning and request program review

- ☐ Schedule an appointment with your advisor

- ☐ **Set a Goal. Make a Plan!**



**ARIZONA
WESTERN**
COLLEGE

Matador

**IT'S A GREAT DAY
TO BE A MATADOR**

