

ARIZONA WESTERN COLLEGE

CATALOG **2010–2011**
Addendum

Arizona Western College

P.O. Box 929

Yuma, Arizona 85366-0929

2020 S. Avenue 8E

Yuma, Arizona 85365-8834

(928) 317-6000

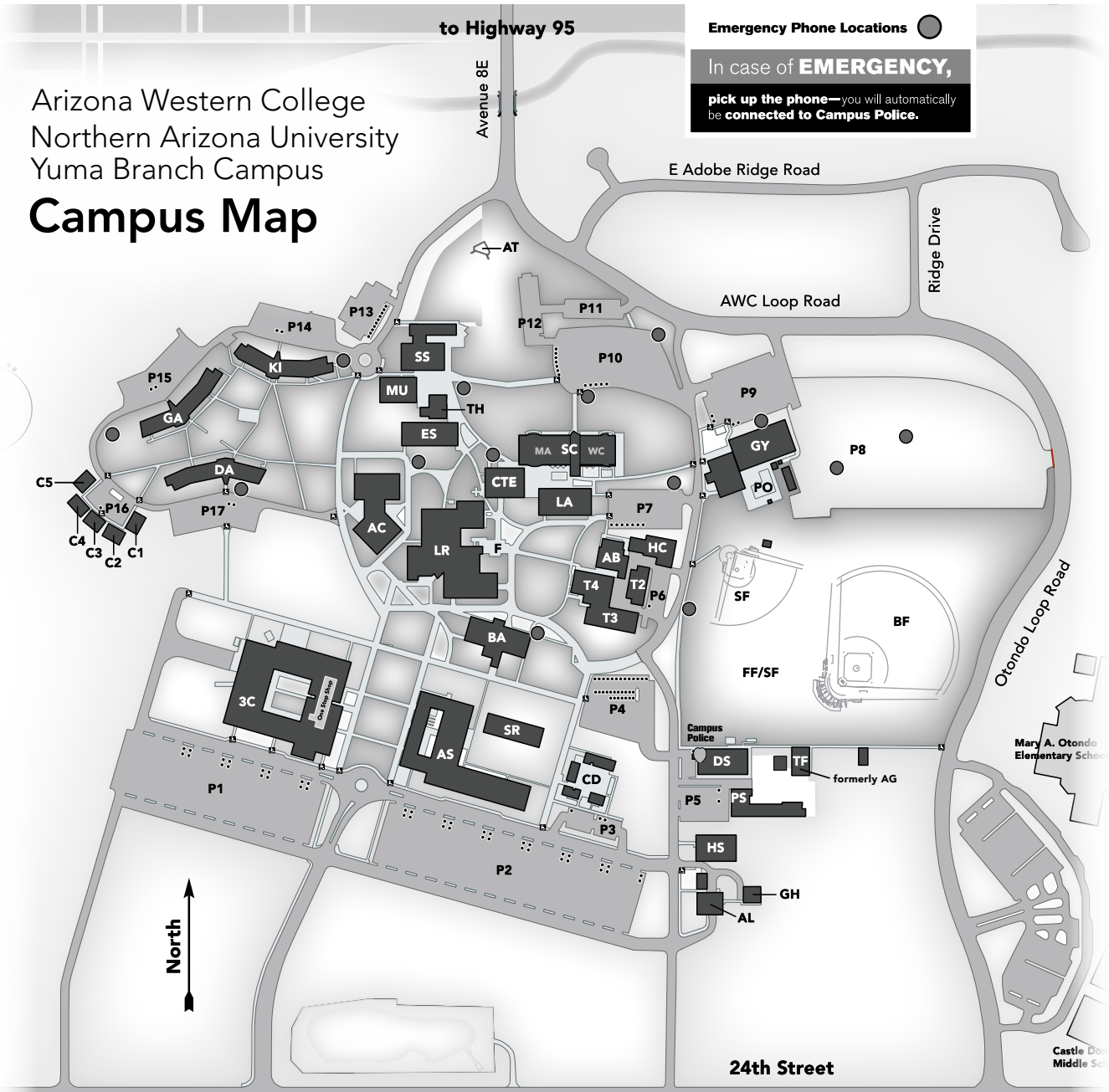
(888) 293-0392

www.azwestern.edu

AWC Campus Map

Arizona Western College
Northern Arizona University
Yuma Branch Campus

Campus Map



- | | | |
|---|-------------------------------|--|
| 3C College Community Center | F Fountain | PS Postal Services |
| AB Arts Building | FF Football Field | SC Student Success Center
(MA Math Center & WC Writing Center) |
| AC Academic Complex | GA Garces Dorm | SF Softball & Soccer Fields |
| AL Agriculture Research Lab | GH Greenhouse Complex | SR NAU Research & Education |
| AS Agriculture and Science | GY Gymnasium | SS SS Building |
| AT Amphitheater | HC Heating and Cooling | T2 Technology 2 (Welding) |
| BA Business Administration | HS Human Services | T3 Technology 3 (Auto Mechanics &
Print Services Lab) |
| BF Kammann Baseball Field | KI Kino Dorm | T4 Technology 4 (Computer Graphics) |
| C1-5 Cottages 1-5 | LA Liberal Arts | TH Theater |
| CD Child Development Learning Lab | LR Learning Resources | ● Handicap Parking |
| DA DeAnza Dorm | MU Music | ♿ Wheelchair Access |
| DS District Services (Campus Police) | P1-17 Parking Lots | |
| ES Educational Services | PO Pool | |

About the 2010–2011 AWC Catalog Addendum

The contents of this catalog supercede the content specified in the 2010-2011 catalog where noted. Contents of the 2010-2011 catalog not revised in this addendum remain in effect. The unrevised content of the 2010-2011 catalog and the revised content of this addendum are valid for the 2010-2011 academic year.

Equal Opportunity Policy and Students with Disabilities

Arizona Western College does not discriminate in admission or access to, or treatment or employment in, its services, programs, or activities on the basis of race, color, national origin, sex, religion, age (40+) or disability, in compliance with the laws of the United States and the state of Arizona. The College seeks to provide disabled or handicapped students with any reasonable accommodation in order to facilitate access to College classes and activities. Students seeking such an accommodation should make an official request at Counseling/Advising Services or Disability Services located in the Student Services Building on campus. Any questions regarding the applicability of state and federal anti-discrimination laws to Arizona Western College and its services, programs or activities, and any grievances or claims of violation of such laws, should be directed to its compliance officer:

The Vice President for Business and Administrative Services

P.O. Box 929
Yuma, AZ 85366-0929
(928) 344-7515

Accreditation

Arizona Western College is accredited by The Higher Learning Commission and is a member of the North Central Association.

The Higher Learning Commission

30 N. LaSalle Street, Suite 2400
Chicago, IL 60602-2504
(800) 621-7440

Disclaimer

The provisions in this catalog addendum are not to be regarded as a contract between the student and Arizona Western College. The College reserves the right to change any provisions or requirements when such action will serve the interest of the College or the students. The College further reserves the right to deny admission, cancel registration, or ask a student to withdraw when it considers such action to be in the best interest of the College.

Several sections of this catalog addendum are hereby declared to be independent and severable; and, if any section, subdivision, word, sentence, or clause in this catalog be held void or non-enforceable, such holding shall not affect the validity of enforcement of any other part of this catalog which can be given effect without the invalid or non-enforceable portion.

Catalog Expiration

The information contained in this catalog addendum is valid from the start of fall 2010 through the end of summer session 2011 and may continue in effect until the 2011-2012 Catalog is issued and in effect.

ACADEMIC CALENDAR 2010–2011

The following information is new or has been revised.

Fall Semester 2010

Faculty Report.....	Wednesday, August 12
Residence Halls Open.....	Thursday, August 14 at 10:00 A.M.
Classes Begin	Monday, August 17
Add/Drop.....	Monday–Thursday, August 17–20
Labor Day	No Classes Monday, September 7
Veterans Day	No Classes Tuesday, November 11
Last Day to Withdraw.....	Thursday, November 5
Thanksgiving Holiday.....	No Classes Thursday–Saturday, November 26–29
Last Day of Classes.....	Thursday, December 3
Final Examination Week	Monday–Thursday, December 7–10
Final Duty Day for Faculty	Thursday, December 10

Spring Semester 2011

Faculty Report.....	Wednesday, January 5
Residence Halls Open.....	Thursday, January 6 at 10:00 A.M.
Classes Begin	Monday, January 10
Add/Drop.....	Monday–Thursday, January 10–20
Martin Luther King Jr. Holiday	No Classes Monday, January 17
Faculty Professional Development.....	No Classes Thursday, February 17
Spring Recess	No Classes Sunday–Saturday, March 27–April 2
Last Day to Withdraw.....	Thursday, April 7
Last Day of Classes.....	Thursday, May 5
Final Examination Week	Monday–Thursday, May 9–12
Final Duty Day for Faculty	Friday, May 13
Commencement.....	Friday, May 13

AWC MISSION

Arizona Western College offers educational, career, and lifelong learning opportunities through innovative partnerships which enhance the lives of people in Yuma and La Paz counties.

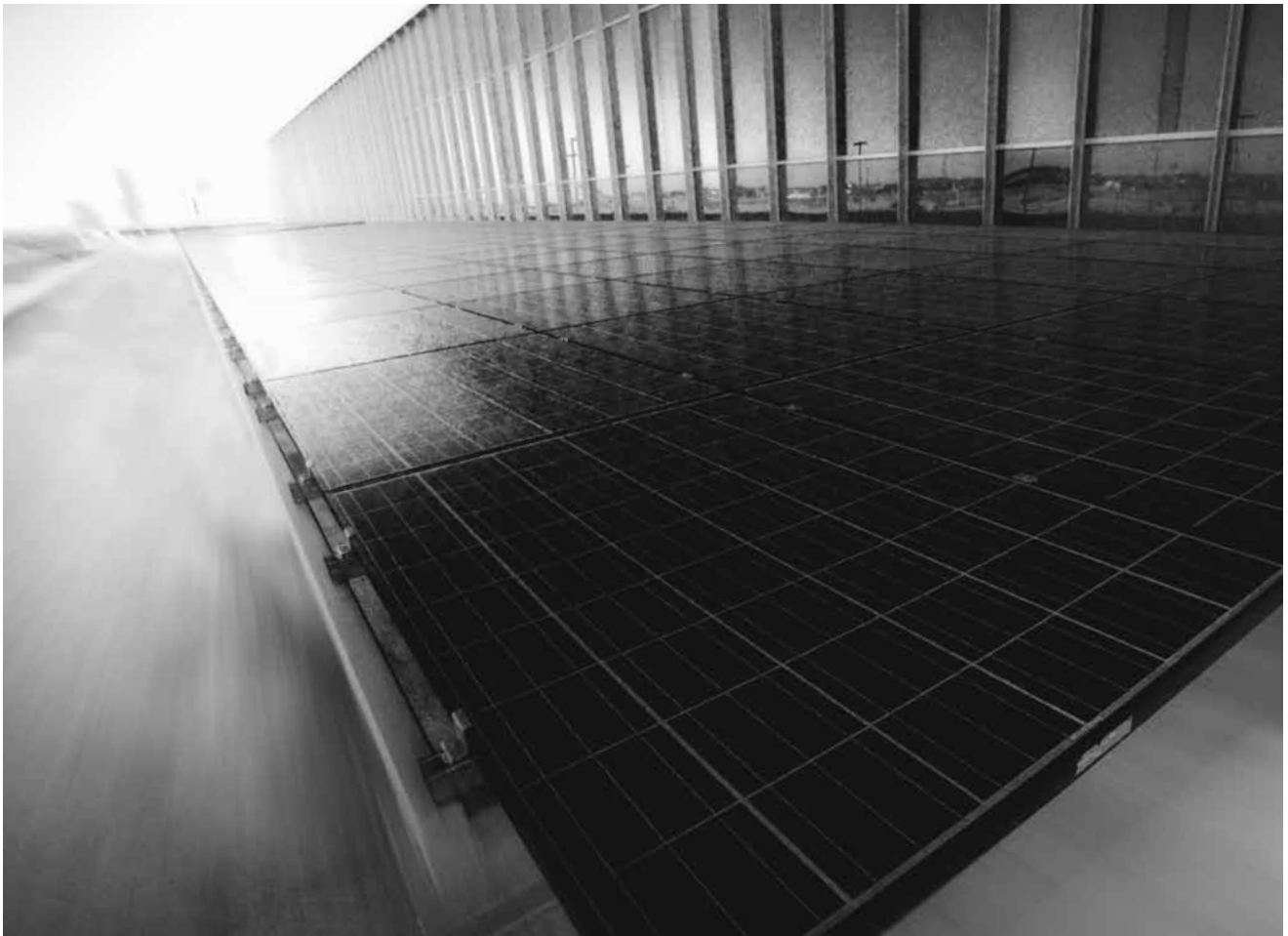


TABLE OF CONTENTS

Academic Calendars

Fall Semester 2010.....IV

Spring Semester 2011IV

General Information 1–2

Degrees & Certificates 3–8

Course Descriptions 9–15

General Information

The following information is new
or has been revised.



Change of Enrollment

Withdrawals

After the designated add/drop period and through the first three quarters of the course, or as specified by the Director of Admissions/Registrar or designee, students may withdraw from one or more classes and receive a grade of "W" on their official academic record. Classes lasting less than an entire semester may have a different withdrawal period.

- Students who withdraw from **all** their AWC courses (even if enrolled in only one course) during a given semester must see an advisor in Advisement Services prior to submitting a withdrawal form.
- Students who withdraw from any AWC course must submit a Withdrawal Form to the Admissions and Registration Office or any AWC off campus site.
- The date a withdrawal notification is received in the Admissions and Registration Office or any AWC off campus site is considered the student's last date of attendance in the specified class(es).

Pursuant to 15-1466.02 ©, on the forty-fifth day class rosters, each professor or instructor shall indicate as withdrawn each student who has not been attending class, even if the student has not formally withdrawn from the course a grade of "AW" (administrative withdrawal) will be awarded. After the forty-fifth day, if a student is unable to attend the course for any reason, it will be the responsibility of the student to withdraw from the course.

For financial aid recipients, withdrawing may affect your award. Check with the Financial Aid Disbursement Department in the Business Office. Please see p. 25 for refund eligibility criteria.

Degrees & Certificates

The following information is new
or has been revised.



2010–2011 Degrees

Transfer Degrees

(64 credits)

(A.A., A.Bus., A.S.)

Administration of Justice Studies (A.A.)

Agricultural Science (A.A.)

American Indian Studies (A.A.)

Art: Graphics (A.A.)

Art: Studio Art (A.A.)

Biology (A.S.)

Business (A.Bus.)

Chemistry (A.S.)

Crop Production (A.S.)

Education—Elementary (A.A.)

Education—Elementary (A.A.)

Early Childhood Education Emphasis

Education—Secondary (A.A.)

Engineering (A.S.)

English (A.A.)

Environmental Sciences (A.S.)

Applied Geology Emphasis

Biology Emphasis

Family Studies (A.A.)

General Studies (A.A. or A.S.)

Geology (A.S.)

History (A.A.)

Hotel/Restaurant Management (A.A.)

Industrial Maintenance and Instrumentation Technology (A.S.)

Mathematics (A.A.)

Media Arts (A.A.)

Music (A.A.)

Philosophy (A.A.)

Physics (A.S.)

Political Science (A.A.)

Psychology/Sociology (A.A.)

Spanish (A.A.)

Theatre (A.A.)

General Studies

(64 credits)

(A.G.S.) *In Selected Area:*

Agricultural Sciences

Business

Communications

Fine Arts

Honors

Mathematics

Modern Languages

Physical Education, Recreation and Sport

Science

Social Science

Technology

Occupational Degrees

(64 or more credits)

(A.A.S.)

Accounting

Administration of Justice Studies

Air Conditioning and Refrigeration

Applied Agriculture

Architectural Technology

Automotive Technology

Broadcasting

Business, General

Carpentry

Civil Engineering Technology

Computer Graphics

Computer Information Systems

Construction Trades Management

Early Childhood Education

Electrical Technology

EMS—Paramedic

Fire Science

Industrial Maintenance & Instrumentation Technology

Industrial Technology

Industrial Water Treatment

Law Enforcement Training

Logistics

Marketing and Management

Massage Therapy

Media Arts

Microcomputer Business Applications

Nursing—The Healing Community

Office Administration

Paralegal Studies

Plumbing

Radiologic Technology

Recreation Management

Solar Photovoltaic Installation

Solar Technology—Electrical Option

Solar Technology—Manufacturing Option

Television Production

Welding

2010–2011 Certificates

Occupational Certificates

(variable credits)

Accounting	EMS—Paramedic	Retail Management
Agriculture, Occupational	EMT—Basic	Solar Panel Installation Level 1
Air Conditioning and Refrigeration	Engineering Technology	Solar Technology
Architectural Technology	Entrepreneurial	Spanish Language Proficiency
Athletic Coaching	Family Childcare Education	Welding
Automotive Brakes and Suspension	Family Development Credential	Welding Certificate of Proficiency GMAW (Gas metal Arc Welding)/FCAW (Flux Core Arc Welding) Plate
Automotive Computer Fundamentals, Engine Performance, and Diagnostics	Fire Academy	Welding Certificate of Proficiency SMAW (Shielded Metal Arc Welding) Plate
Automotive Electrical and Air Conditioning	Foundations of Construction	
Automotive Power Trains	Green Construction Methods	
Automotive Technology	Industrial Graphics Drafting/CAD	
AWS (American Welding Society) Entry Level 1	Industrial Water Treatment	
Basic Air Conditioning and Refrigeration Service Technician	Infant and Toddler Education	
Basic Carpentry	Law Enforcement Training Academy	
Basic Custodial Maintenance	Logistics Advanced	
Basic Electrical	Logistics Basic	
Basic Plumbing	Manufacturing Equipment Maintenance and Repair Technology	
Business Entrepreneur	Masonry	
Carpentry	Massage Therapy	
Computer Information Systems	Media Arts	
Computer Security	Microcomputer Business Applications	
Culinary Arts	Networking	
Culinary Arts with a focus in Entrepreneurship	Nursing, Assistant	
Custodial Management	Nursing, Practical	
Detention Officer Operations	Office Administration	
Dietetics	Paralegal Studies	
Early Childhood Education	Personal Trainer	
Electrical Technology	Plumbing Technology	
	Pre-Health Careers	
	Preschool Education	
	Recreation Management	

AGEC Certificates

35–38 credits

AZ Gen. Ed. Curriculum—Arts (AGEC-A)

AZ Gen. Ed. Curriculum—Business (AGEC-B)

AZ Gen. Ed. Curriculum—Science (AGEC-S)

Course Cluster

English as a Second Language (ESL)

DEGREES AND CERTIFICATES

American Indian Studies

Associate in Arts (A.A.) degree

Pathway: AA/SR

Major Code: AA.AIS

Contact: Business and Liberal Arts Division (928) 344-7689

Program Purpose: Provides an opportunity for Arizona Western College to support the local Native American heritage and to acquaint both the Native Americans and the Non-Native American community with Pan-Indian experience.

Program Description: American Indian Studies provides an educational experience that will develop appreciation, understanding and protection of Native American cultures and their histories. It introduces students to the diversity and uniqueness of Native American cultures, their sovereignty as independent nations and the challenges they face in our contemporary society.

A. Required major courses:..... 15

ANT 100 Introduction to Anthropology	3
ANT 130 Introduction to Cultural Anthropology.....	3
ANT 140 Introduction to Native American Studies	3
AIS 180 Overview of American Indian Studies.....	3
AIS 220 Introduction to Contemporary American Indian Studies	3

B. Other departmental requirements: 0

C. Suggested AGEC courses:

By taking ANT 100 and ANT 130 in the major courses listed above, you also satisfy Social and Behavioral requirements in the AGEC below. Students must still meet the required number of credits to satisfy the program or degree. This dual application of courses gives students the opportunity to include additional course work under general electives.

D. Arizona General Education Curriculum

—Arts (AGEC-A):..... 35

Freshman Composition (ENG 101 and 102)	6
Mathematics (MAT 142 College Mathematics with Applications or approved higher level math)	3
Arts and Humanities	6–9
<i>(Select at least one course from the Arts list and one course from the Humanities list.)</i>	
Social and Behavioral Sciences	6–9
Physical and Biological Sciences	8
<i>(Select any two courses with labs.)</i>	
Options	0–6

**Because of the university requirement of demonstrating proficiency in a single second language at either the second or fourth semester level, you should consult the transfer guide of the university to which you wish to transfer for specific instructions. To demonstrate proficiency by means other than course work, see p. 55 of the catalog.*

E. General electives:..... 14

Please consult your academic counselor or faculty advisor for the selection of general electives; the university transfer guides may list additional courses which are either required or recommended in this major.

Total credits required for degree:..... 64

Industrial Maintenance and Instrumentation Technology

Associate in Applied Science (A.A.S.) degree

Major Code: AAS.IMT

Contact: Career and Technical Education Division (928) 344-7567

Program Purpose: Graduates will demonstrate (1) basic knowledge in industrial maintenance and instrumentation technology that will prepare them to obtain an entry-level position within the field (2) competency in communication, critical thinking, quantitative analysis, and technological applications.

Program Description: Students gain basic competencies in welding, electrical theory, safety, interpreting construction drawings, the safe use of power tools, understanding the purpose and use of major electrical, hydraulic and pneumatic components, piping and tubing layouts and the proper use of test instrumentation.

A. Required major courses:..... 24

MFG 100 Core Curriculum Introductory Craft Skills.....	5
MFG 140 Industrial Maintenance Electrical and Instrumentation Level I.....	3
MFG 141 Industrial Maintenance Electrical and Instrumentation Level II.....	3
MFG 142 Industrial Maintenance Electrical and Instrumentation Level III.....	3
MFG 143 Industrial Maintenance Electrical and Instrumentation Level IV.....	3
MFG 144 Programmable Logic Controllers	4
MFG 145 Pipe Layout and Installation.....	3

B. Other departmental requirements: 19

MFG 170 Introduction to Lean Manufacturing	3
MFG 185 Quality Control and Inspection	3
MFG 191 Machine Tool Operations	4
TEC 165 Employee and Occupational Safety.....	3
WLD 109 Techniques in Gas Metal Arc Welding.....	3
WLD 123 Manufacturing/Welding Technology Survey.3	

C. General education requirements:21

English Composition (ENG 100, 101, or 102)	6
Mathematics (MAT 105 Mathematics for the Applied Sciences or approved higher level math).....	3
Arts and Humanities	3
Social and Behavioral Sciences	3
Physical and Biological Sciences	4
Options	2

D. General electives:.....0

Total credits required for degree:..... 64

Solar Panel Installation Level 1

Certificate

Major Code: CERT.SOLIN

Contact: Career and Technical Education Division (928) 344-7567

Program Purpose: Graduates will demonstrate basic knowledge in the installation of both residential and commercial photovoltaic panels preparing them to sit for the North American Board of Certified Energy Practitioners (NABCEP) PV Entry Level Examination.

Program Description: Students enrolled in this program using a nationally developed curriculum will develop knowledge and skills to successfully install photovoltaic panels. The student will gain a basic understanding of electrical theory, wiring to proper code requirements, proper safety and panel mounting, panel positioning and tie-in to the commercial grid. Students will have the skills necessary to enter the workforce as an entry level solar panel installer.

A. Required major courses:..... 31

ECT 100 Core Curriculum Introductory Craft Skills.....	5
ECT 105 Basic Electricity	3
ECT 110 AC/DC Circuits	4
ECT 115 National Electrical Code.....	3
ECT 220 Electrical Installation.....	5
ECT 225 Load Calculation	3
TEC 140 Roofing Construction & Safety.....	2
SLR 105 Intro to Solar Photovoltaics 1	3
SLR 110 Intro to Solar Photovoltaics 2	3

Total credits required for certificate:31

Solar Photovoltaic Installation

Associate in Applied Science (A.A.S.) degree

Major Code: AAS.SOLPV

Contact: Career and Technical Education Division (928) 344-7567

Program Purpose: Graduates will demonstrate 1) basic knowledge in the installation of both residential and commercial photovoltaic panels preparing them to sit for the North American Board of Certified Energy Practitioners (NABCEP) PV Entry Level Examination. 2) competency in communication, critical thinking, quantitative analysis and technological applications prepare the student for career opportunities in the manufacturing industry with an emphasis on plant electrical operations and solar technology.

Program Description: Students enrolled in this program using a nationally developed curriculum will develop knowledge and skills to successfully install photovoltaic panels. The student will gain a basic understanding of electrical theory, wiring to proper code requirements, proper safety and panel mounting, panel positioning and tie-in to the commercial grid. Students will have the skills necessary to enter the workforce as an entry level solar panel installer.

A. Required major courses:	31
ECT 100 Core Curriculum Introductory Craft Skills.....	5
ECT 105 Basic Electricity	3
ECT 110 AC/DC Circuits	4
ECT 115 National Electrical Code.....	3
ECT 220 Electrical Installation.....	5
ECT 225 Load Calculation	3
TEC 140 Roofing Construction & Safety	2
SLR 105 Intro to Solar Photovoltaics 1	3
SLR 110 Intro to Solar Photovoltaics 2	3
B. Other departmental requirements:	11
ECT 205 Fixtures and Installation	4
ECT 210 Control Circuits	4
MFG 195 Materials Science and Metallurgy	3
C. General education requirements:	21
English Composition (ENG 100, 101, or 102)	6
Mathematics (MAT 105 Mathematics for the Applied Sciences or approved higher level math).....	3
Arts and Humanities	3
Social and Behavioral Sciences	3
Physical and Biological Sciences	4
Options	2
D. General electives:	1
Total credits required for degree:	64

Pre-Health Careers

Certificate

Major Code: CERT.PREHC

Contact: Career and Technical Education Division (928) 344-7567

Program Purpose: To prepare the student to enter the healthcare related career programs.

Program Description: Provide students interested in a health care profession with a consolidated group of courses that will meet the prerequisites for entering into various health care programs

A. Required major courses:	8
AHE 101 Medical Terminology.....	3
EMS 106 Introduction to Health Care.....	5
B. Other departmental requirements:	22
BIO 160 Intro. to Anatomy and Physiology	4
ENG 100, 101 or 102 English Composition	3
MAT 105 Mathematics for the Applied Sciences	3
or	
MAT 142 College Mathematics with Applications or approved higher level math.....	3
<i>(contact advisor for specific course recommendation)</i>	
ORI 101 Strategies for Success	3
PHI 220 Medical Ethics.....	3
PSY 101 Introduction to Psychology	3
C. General electives: <i>(contact advisor for specific course recommendation)</i>	3
Total credits required for certificate:	33

Course Descriptions

The following information is new
or has been revised.



THIS SECTION OF THE CATALOG PROVIDES DESCRIPTIONS OF THE COURSES OFFERED AT AWC. Each description also includes credits and pre-requisites/co-requisites for the course. All courses are listed alphabetically by course prefix, and numerically by course number. For more information on any specific course, contact the school offering the course.

Prefix Definitions

ACC	Accounting
ACR	Air Conditioning and Refrigeration
AGB	Agricultural Business Management
AGR	Agricultural Resources
AGS	Agricultural Science
AHE	Allied Health
 AIS	American Indian Studies
AJS	Administration of Justice Studies
ANS	Animal Sciences
ANT	Anthropology
ARC	Architectural Technology
ARH	Art History
ART	Art
ASL	American Sign Language
AST	Astronomy
AUT	Automotive Technology
BDC	Broadcasting
BIO	Biology
BUA	Business Administration
CED	Cooperative Education
CET	Civil Engineering Technology
CHM	Chemistry
CIM	Computer Information Management
CIS	Computer Information Systems
CMS	Custodial Maintenance Service
CTM	Construction Trades Management
CUL	Culinary Arts
DNC	Dance
DFT	Drafting
ECE	Early Childhood Education
ECN	Economics

ECT	Electrical Construction Trades
EDU	Education
EGR	Engineering
EMS	Emergency Medical Services
ENG	English
ENT	Entrepreneurial Education
ENV	Environmental Science
ESL	English as a Second Language
FAS	Family Studies
FIN	Finance
FRE	French
FSC	Fire Science
GEO	Geography
GER	German
GLG	Geology
GPH	Physical Geography
GRA	Computer Graphics
HIS	History
HON	Honors
HRM	Hotel/Restaurant Management
IWT	Industrial Water Treatment
JRN	Journalism
LAS	Paralegal Studies
LET	Law Enforcement Training
LGS	Logistics
LMT	Licensed Massage Therapy
MAS	Masonry
MAT	Mathematics
MFG	Manufacturing
MGT	Management
MKT	Marketing
MUS	Music
NTR	Nutrition

NUR	Nursing
OCN	Oceanography
ORI	Orientation
PCT	Plumbing Construction Trades
PED	Physical Education
PEM	Physical Education Management
PER	Physical Education Recreation
PHI	Philosophy
PHY	Physics
PLS	Plant Science
POS	Political Science
PSY	Psychology
PTR	Personal Trainer
QBA	Quantitative Business Analysis
RAD	Radiologic Technology
RDG	Reading
REC	Recreation Management
REL	Religious Studies
SCI	Interdisciplinary Science
SEI	Structured English Immersion
SLR	Solar
SLT	Second Language Teaching
SOC	Sociology
SPA	Spanish
SPC	Speech Communications
STU	Student Success
TEC	Technology
THE	Theatre
TVP	Television Production
WED	Wellness Education
WLD	Welding

GUIDE TO COURSE TERMINOLOGY

Course Credit, Frequency of Offering, and Mode of Instruction

Some of the listed courses may not be offered this year, or in sequence, based on budget considerations or student interest. The fact that a course is listed does not guarantee that it will be offered; consult the appropriate AWC Class Schedule.

All course descriptions within the catalog identify the number of credits, the number of contact hours per week for lecture/demonstration and, if applicable, laboratory, recitation, or clinical time. This information follows the course title. See the "Key to Reading Course Descriptions" below.

Course Numbering

The number by which all courses are designated indicates the relative advancement of the course. The following explanation should be helpful to students in planning their respective programs.

Course numbers from:

- **10-99:** In general, these courses are unique to the community college. They carry credit towards certification in designated programs but are not designed for transfer to a four-year college or university.
- **100-199:** Freshman courses which meet the requirements for an associate degree at Arizona Western College and/or transfer to other colleges or universities.
- **200-299:** Sophomore courses which meet the requirements for an associate degree at Arizona Western College and/or transfer to other colleges or universities.

Some 100 and 200 level courses **may not transfer to Arizona universities;** for specific transferability go to www.aztransfer.com to consult the Course Equivalency Guide.

Courses designated as 100G or 100E do not have a direct course equivalency at Arizona Western College. These courses may not count within any particular department or major but may count as a general education or elective credit. These courses will appear with the appropriate department prefix and 100G or 100E on AWC transcripts.

Pre-requisites:

Pre-requisite courses are indicated as "PRE" and **must** have a minimum grade of "C" or "CR," unless otherwise indicated.

Key to Reading Course Descriptions

Example: **ACC 111 Career Accounting 1**

3 cr, 3 lec, 1 lab

cr..... credits (semester hours/units)
lec.....lecture/week
lab.....laboratory experience/week
clin..... clinical experience/week
rec..... recitation/week
CR/NC..... course is offered for credit/no credit **only**
R..... may be repeated for credit

Open Entry/Open Exit*

*A limited number of courses are offered on an open entry/open exit basis. This means the student may enroll anytime throughout the academic semester and exit (complete) the course when course requirements have been met.

lec, lab, rec, clin	credit	required minutes
1 lec	1	800
1 lab	.5	800
1 rec	.5	800
1 clin (EMS)	.5	800
1 clin (NUR, AHE)	.333	800
1 clin (RAD)	.166	800

Key to Arizona General Education Curriculum (AGEC) Awareness Areas

Throughout the Course Description section, courses, which have been approved as Arizona General Education Curriculum (AGEC) courses, are identified with the following symbols below the course title:

W.....Writing Intensive/Critical Inquiry
*(all AGEC courses are **W**, except **MAT** and 100-level second languages: **ASL, FRE, GER, SPA**)*

C.....Cultural (*Ethnic, Race, Gender*) Awareness
G.....Global Awareness
H.....Historical Awareness

In Arizona transfer degrees (A.A., A. Bus., A.S.), one Cultural (C) course and one Global (G) or Historical (H) course are required.

AGS 110 Introduction to “Food Safety

2 cr, 1.5 lec, 1 lab

Introduction to food safety. This course covers conditions and practices that cause food-borne illnesses, organisms responsible, elements of a food safety control system, worker sanitation, and the best practices for processing, retail and the home kitchen.

PRE: *ENG 101 eligibility, completion of RDG 121 or appropriate reading score*

AGS 200 Food Safety Practices and Management

4 cr, 3.5 lec, 1 lab

Focuses on establishing agricultural practices as they relate to the production of farm products from a food safety standpoint. Covers the specific guidelines for some key agricultural commodities, regulating and monitoring food safety guidelines, writing standard operating procedures, employee training, and technologies to assist in production of safe food.

PRE: *ENG 101 eligibility, completion of RDG 121 or appropriate reading score*

NOTE: *Completion of AGS 110 and BIO 205 suggested.*

AGS 220 Food Safety in Facilities

4 cr, 3.5 lec, 1 lab

Covers food safety issues and concerns in the manufacturing facility including such as: facility sanitation, recognizing potential hazards, analysis of problems in the cold chain, developing improved practices, Hazard Analysis and Critical Control Point (HAACP) principles, employee training, and the inspection process.

PRE: *ENG 101 eligibility, completion of RDG 121 or appropriate reading score*

NOTE: *Completion of AGS 110 and BIO 205 suggested.*

AGS 240 Environmental Effects on Food Safety

3 cr, 2.5 lec, 1 lab

Potential environmental sources and transport mechanisms of food-borne pathogens. Students will learn how to make informed decisions about the potential effects of local site conditions on food safety. Covers the role of site conditions in pathogen transport such as: livestock proximity, wildlife behavior and habitat, rainfall and irrigation runoff, soil types, slope, aspect, climate, soil erosion and deposition by water and wind, flooding, vegetation and the behavior of pathogens in the environment.

PRE: *ENG 101 eligibility, completion of RDG 121 or appropriate reading score*

NOTE: *Completion of AGS 110 and BIO 205 suggested.*

AIS 220 Introduction to Contemporary American Indian Issues

3 cr, 3 lec

Introduction to contemporary issues affecting American Indians in the United States.

PRE: *AIS 180*

ANT 70 Topics in Anthropology

.5-4 cr, 0-1 lec, 1-8 lab

Workshops for individual exploration in anthropology. Designed for the enrichment needs of the student who is not seeking transferable credit. **CR/NC**

DNC 70 Ballroom Dance

1 cr, 1 lec, 1 lab

Ballroom dance for personal, social and fitness benefits. **CR/NC**

DNC 150 Beginning Ballet

2 cr, 1 lec, 2 lab

Study of ballet at a beginner level.

Note: *Appropriate attire required*

DNC 151 Intermediate Ballet

2 cr, 1 lec, 2 lab

Study of ballet at an intermediate level.

Note: *Appropriate attire required*

ECT 220 Electrical Installation

5 cr, 4 lec, 2 lab

Electrical installations for commercial and residential applications.

PRE: *ECT 110 and ECT 115*

ECT 225 Load Calculations

3 cr, 2 lec, 2 lab

Advanced electrical load calculation.

PRE: *ECT 110 and ECT 115*

EMS 106 Introduction to “Health Careers

5 cr, 4 lec, 2 lab

This course prepares the student for acceptance into various healthcare related career programs by emphasizing basic health related topics and introductory emergency management procedures. Students gain insight into specific health careers by having direct contact with visiting health experts.

PRE: *ENG 100 or higher*

FAS 70 Topics in Family Studies

.5-4 cr, 0-1 lec, 1-8 lab

Workshops for individual exploration concerning family studies. Designed for the enrichment needs of the student who is not seeking transferable credit.

CR/NC

FSC 130 Basic Wildland Firefighter

3 cr, 2 lec, 2 lab

Basic understanding of wildland fire and the strategies and tactics involved during suppression operations. Students receive training to qualify as Basic Wildland Firefighters (FFT2) as defined by the National Wildfire Coordinating Group.

FSC 148 Fire Academy 1*12 cr, 10 lec, 5 lab*

Knowledge and practical skills necessary for certification as an entry-level Firefighter I. Successful completion qualifies the student to sit for the Firefighter I and II certification examination conducted by the Office of the Arizona State Fire Marshall.

PRE: 1) High School Diploma or GED 2) Meet the minimum written test requirements 3) Minimum age requirement of 18 years 3) Meet the medical requirements of NFPA 1582 4) Complete a liability waiver 5) Meet the minimum physical fitness requirements 6) Permission of the Academy Coordinator or Public Safety Institute Director

FSC 149 Fire Academy 2*12 cr, 10 lec, 5 lab*

Knowledge and practical skills necessary for certification as an entry-level firefighter II. Successful completion qualifies the student to sit for the Firefighter I and II certification examination conducted by the Office of the Arizona State Fire Marshall.

PRE: FSC 148**FSC 204 Fire Fighting Tactics and Strategies***3 cr, 3 lec*

Course is designed to train fire department personnel in efficient and effective utilization of manpower, equipment and apparatus. Emphasis is placed on preplanning, fire ground organization; problem solving related to fire ground decisions and fire combat tactics and strategy.

PRE: FSC 149 or certification as Fire Fighter 2**FSC 216 Fire Officer 1***3 cr, 2 lec, 2 lab*

This course provides personnel with the knowledge and skills in the organizational structure of the department; departmental operating procedures

for administration, emergency operations, and safety; departmental budget process; information management and record keeping; the fire prevention and building safety codes and ordinances applicable to the jurisdiction; incident management system; socioeconomic and political factors that impact the fire service; cultural diversity; methods used by supervisors to obtain cooperation within a group of subordinates; the rights of management and members; agreements in force between the organization and members; policies and procedures regarding the operation of the department as they involve supervisors and members. This course meets selected objectives of NFPA 1021 Standard for Fire Officer Professional Qualifications as published by the National Fire Protection Association.

PRE: FSC 149 and FSC 154 or certification as Fire Fighter 2 and certification as Fire Instructor 1**HIS 70 Topics in History***.5-4 cr, 0-1 lec, 1-8 lab*

Workshops for individual exploration in history. Designed for the enrichment needs of the student who is not seeking transferable credit. **CR/NC**

MUS 93A Young String Ambassadors*1 cr, 1 lec, 2 lab*

Basic skills for the string instrument, ear and musical rhythm training, memorization, ensemble teamwork, and performing in public.

NOTE: Audition required.**MUS 93B Young String Ambassadors***1 cr, 1 lec, 2 lab*

Intermediate skills for the string instrument, ear and musical rhythm training, memorization, ensemble teamwork, and performing in public.

NOTE: Audition required.**MUS 93C Young String Ambassadors***1 cr, 1 lec, 2 lab*

Advanced skills for the string instrument, ear and musical rhythm training, memorization, ensemble teamwork, and performing in public.

NOTE: Audition required.**NUR 115 Transition to Associate Degree Nursing***1 cr, 1 lec*

Orientation and preparation to enter the Associate Degree in Nursing as a readmission or transfer student, or as a Licensed Practical Nurse (LPN). Includes verification of skills competency, completion of program health and safety requirements, orientation to appropriate clinical facilities, and a review of the application of the Nursing Process. LPN's will explore major concepts for role transitioning. **CR/NC**

PRE: Admission to Nursing Program**PER 70 Topics in Fitness***.5-3 cr, 0-1 lec, 1-6 lab*

Workshops for individual exploration in fitness. Designed for the enrichment needs of the student who is not seeking transferable credit. **CR/NC**

PLS 270 Turfgrass Management*3 cr, 3 lec*

Course will address specialized cultural management practices and relevant construction principles for golf courses and sport turf fields. Students will develop organizational strategies used for maintenance of the above areas.

SLR 105 Introduction to Solar Photovoltaics 1*3 cr, 2 lec, 2 lab*

Introduction to photovoltaic (PV) systems.

NOTE: Completion of ECT 220 and 225 or prior experience as an electrical contractor recommended

**SLR 110 Introduction to Solar
Photovoltaics 2**

3 cr, 2 lec, 2 lab

Advanced photovoltaic (PV) training.

PRE: SLR 105

**TEC 140 Roofing Systems and
Safety**

2 cr, 1 lec, 2 lab

Focus is on the practical application and interpretation of appropriate safety and health standards relating to roofing systems, construction methods and materials for solar panel installation; this includes an introduction to established Occupational Safety and Health Standards.

**TEC 250 NCCER Instructor
Certification Training**

1.5 cr, 1.5 lec

A specific course for construction or industrial maintenance craft instructor certification through the National Center for Construction Education and Research (NCCER) instructor certification training.

WED 70 Topics in Wellness

.5-3 cr, 0-1 lec, 1-6 lab

Workshops for individual exploration in wellness. Designed for the enrichment needs of the student who is not seeking transferable credit. **CR/NC**

