



ARIZONA WESTERN COLLEGE

ARIZONA WESTERN COLLEGE

Spring 2008
Standard Reports

The Office of Institutional Effectiveness, Research, and Grants

Mary Schaal, Director

Neph Ahimera, Senior Research Analyst

Cindi Graef, Workforce Development & Vocational Research Analyst

Betty Lopez, Administrative Analyst

TABLE OF CONTENTS

Table of Contents	1
Facts-at-a-Glance	2
Enrollment	
Five-Year Comparison, <i>Spring Semesters: '04, '05, '06, '07, and '08</i>	3
Five-Year Comparison Charts, <i>Spring Semesters: '04, '05, '06, '07, and '08 by Full-Time Student Equivalent (FTSE), age groupings, and special populations</i>	4
By Division and Department, <i>Spring 2008</i>	5
By Location and Delivery Mode, <i>Spring 2008</i>	6
Student Performance	
Transfer Rates, <i>Spring 2005 Cohort</i>	
Three-Year Comparison, <i>Fiscal Years 05-06, 06-07, and 07-08</i>	7
Retention, <i>Fall 2007 FTSE Cohort</i>	
Fall 2007 to Spring 2008	8
Persistence, <i>First-Time-Degree-Seeking Cohort</i>	
Spring 2005 Cohort	9
Persistence, <i>First-Time-Degree-Seeking Cohort</i>	
Spring Cohorts: <i>'04, '05, '06, '07, and '08</i>	10



ARIZONA WESTERN COLLEGE

FACTS-AT-A-GLANCE
SPRING 2008
(as of census day)

		STUDENT HEADCOUNT	PERCENTAGE
ENROLLMENT	Annual Full-Time Equivalent Student	3,378	100%
	Unduplicated Headcount	6,613	100%
FULL-TIME/PART-TIME	Full-time	2,711	41.0%
	Part-time	3,902	59.0%
GENDER	Male	2,490	37.7%
	Female	3,952	59.8%
	Unknown/Unreported	171	2.6%
ETHNICITY/RACE (per IPEDS categories)	Non-resident Alien	752	11.4%
	American Indian/Alaska Native	96	1.5%
	Asian/Pacific Islander	152	2.3%
	Black, non-Hispanic	183	2.8%
	Hispanic	3,351	50.7%
	White, non-Hispanic	1,880	28.4%
	Unknown/Unreported	199	3.0%
AGE GROUPINGS (per IPEDS categories)	Under 18	544	8.2%
	18-19	1,549	23.4%
	20-21	1,150	17.4%
	22-24	822	12.4%
	25-29	773	11.7%
	30-34	464	7.0%
	35-39	390	5.9%
	40-49	500	7.6%
	50-64	290	4.4%
	65+	126	1.9%
	Unknown/Unreported	5	0.1%
	Average Age	27	0.4%
	Median Age	22	0.3%
STUDENT CHARACTERISTICS BY GROUPS	First-time Degree Seeking	679	10.3%
	Need-Based Financial Aid	2,725	41.2%
	Developmental Students	2,099	31.7%
	ESL Students	510	7.7%
	Declared Majors	6,272	94.8%
	Undeclared Majors	341	5.2%
	First Generation	2,763	41.8%
RESIDENCY	Resident	5,335	80.7%
	Out-of-County	220	3.3%
	Out-of-State	406	6.1%
	California Consortium	230	3.5%
	Western Undergraduate Exchange Program	76	1.1%
	Military	343	5.2%
	Foreign	3	0.0%
FINANCIAL AID AWARDED	Total	\$8,788,575.00	
	Number of Students	6,376	
	Number of Awards	3,906	
	Average per Student	\$2,250.00	
	Average per Award	\$1,378.00	
INSTRUCTIONAL STAFF	Full-time Instructors	102	
	Part-time Instructors	270	



ARIZONA WESTERN COLLEGE

ENROLLMENT FIVE-YEAR COMPARISON
SPRING SEMESTERS: 2004, 2005, 2006, 2007, and 2008
(as of census days)

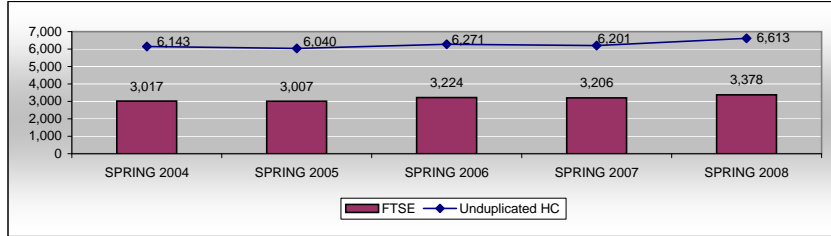
SPRING TO SPRING		STUDENT HEADCOUNT*				
		SPRING 2004	SPRING 2005	SPRING 2006	SPRING 2007	SPRING 2008
GENDER	Male	2,386	2,402	2,467	2,366	2,490
	Female	3,690	3,633	3,772	3,783	3,952
	Unknown/Unreported	67	5	32	52	171
ETHNICITY/RACE (per IPEDS categories)	Non-resident Alien	23	76	710	739	752
	American Indian/Alaska Native	134	120	119	115	96
	Asian/Pacific Islander	101	87	111	145	152
	Black, non-Hispanic	172	142	161	176	183
	Hispanic	3,507	3,546	3,139	3,117	3,351
	White, non-Hispanic	2,049	1,877	1,872	1,754	1,880
	Unknown/Unreported	157	192	159	155	199
AGE GROUPINGS (per IPEDS categories)	Under 18	326	257	312	455	544
	18-19	1,194	1,159	1,303	1,444	1,549
	20-21	962	1,061	1,183	1,108	1,150
	22-24	775	809	809	779	822
	25-29	703	677	745	689	773
	30-34	512	516	493	463	464
	35-39	470	417	378	390	390
	40-49	656	657	624	482	500
	50-64	356	336	310	286	290
	65+	176	141	108	99	126
	Unknown/Unreported	13	10	6	6	5
	Average Age	29	29	28	27	27
	Median Age	24	23	22	22	22
FULL-TIME/PART-TIME	Full-time	1,485	1,290	2,165	2,143	2,711
	Part-time	4,658	4,570	4,106	4,058	3,902
STUDENT CHARACTERISTICS BY GROUPS	First-time Degree Seeking	526	817	656	483	679
	Need-Based Financial Aid	2,130	2,005	2,211	2,324	2,725
	Developmental Students	1,576	1,636	1,957	1,889	2,099
	ESL Students	651	1,101	677	501	510
	Declared Majors	5,064	5,367	5,691	5,797	6,272
	Undeclared Majors	1,079	673	580	404	341
	First Generation	N/A	1,287	2,135	2,318	2,763
TOTAL STUDENT HEADCOUNT*		6,143	6,040	6,271	6,201	6,613
FULL-TIME STUDENT EQUIVALENT (FTSE)		3,017	3,007	3,224	3,206	3,378

*Student Headcount is unduplicated

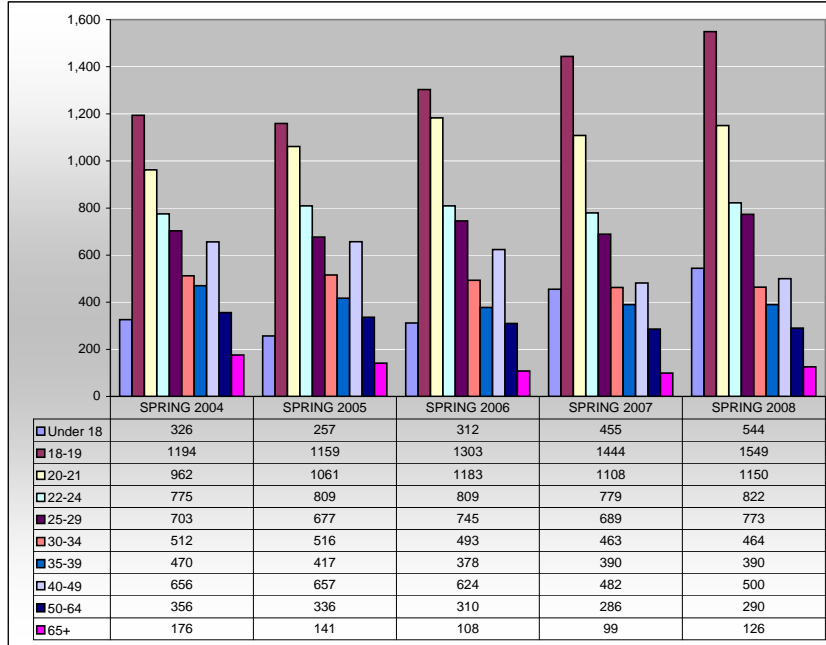


ENROLLMENT COMPARISON CHARTS SPRING 2008 *(as of census day)*

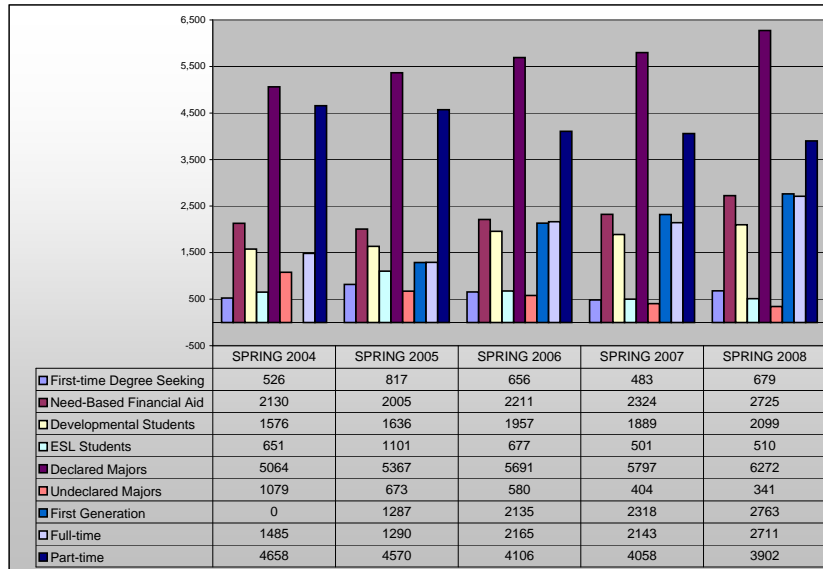
Spring to Spring Full-Time Student Equivalent (FTSE) and Unduplicated
Headcount Enrollment



Spring to Spring Unduplicated Headcount Enrollment: Age
(per IPEDS Categories)



Spring to Spring Unduplicated Headcount Enrollment:
Special Populations



ARIZONA WESTERN COLLEGE

ENROLLMENT BY DIVISION & DEPARTMENT
SPRING 2008
(as of census day)

DIVISION	DEPARTMENT	NUMBER OF SECTIONS	DUPLICATED HEADCOUNT*	NUMBER OF FTSE**
Business and Workforce Development	Community and Educational Partnerships	0	0	0
Teaching, Learning, and Academic Leadership	Institute of Teaching, Learning, and Academic Leadership	12	181	31
Arts, Humanities, and Human Services	English and Reading	166	2,840	568
	Fine Arts and Physical Education	221	2,606	354
	Human Services	134	2,354	481
	Language	82	1,341	336
Career and Technical Education	Business and Computer Information	88	1,465	289
	Construction and Applied Technologies	53	561	126
	Education	37	461	88
	Health Education	31	474	144
	Public Safety	35	609	131
Science, Math, and Agriculture	Agriculture Sciences	9	165	44
	Mathematics	119	2,165	482
	Natural Sciences	28	573	148
	Physical Sciences	19	366	98
TOTALS		1,034	16,161	3,320

Note: *Students are counted once for each class in which they enrolled.

**FTSE: Full-Time Student Equivalent



ARIZONA WESTERN COLLEGE

ENROLLMENT BY LOCATION
SPRING 2008
(as of census day)

		NUMBER OF SECTIONS	DUPLICATED HEADCOUNT*	NUMBER OF FTSE**
LOCATION	Bouse	0	0	0
	Marine Corps Air Station Yuma	4	49	10
	Parker	40	307	46
	Quartzsite	1	4	0.5
	Salome	2	14	1
	San Luis	120	2170	451
	Somerton	46	862	170
	Wellton	5	19	4
	Wenden	0	0	0
	Yuma - Main Campus	757	12017	2515
	Yuma - Other than Main Campus	59	719	121
	Yuma State Prison	0	0	0
TOTAL STUDENT DUPLICATED HEADCOUNT*		1,034	16,161	3,319

Note: *Students are counted once for each class in which they enrolled.

**FTSE: Full-Time Student Equivalent

ENROLLMENT BY DELIVERY MODE
SPRING 2008
(as of census day)

		NUMBER OF SECTIONS	DUPLICATED HEADCOUNT*	NUMBER OF FTSE**
DELIVERY MODE	ITN	24	216	44
	Mixed Media	15	331	66
	Regular	905	14,334	2,948
	Telecourses	2	29	4
	Web/Internet	88	1,251	255
TOTAL		1,034	16,161	3,317

Note: *Students are counted once for each class in which they enrolled.

**FTSE: Full-Time Student Equivalent



ARIZONA WESTERN COLLEGE

TRANSFER RATES, SPRING 2005 COHORT

FISCAL YEARS: 05-06, 06-07 and 07-08

(as of census day)

POPULATION		Spring 2005 Student Cohort	FIRST YEAR		SECOND YEAR			THIRD YEAR		3rd Year Transfer Rate
			FY05-06 Transfer Students	1st Year Transfer Rate	FY06-07 Transfer Students	Accumulative # of Transfer Students: FY05-06 thru 06-07	2nd Year Transfer Rate	FY07-08 Transfer Students	Accumulative # of Transfer Students: FY05-06 thru 07-08	
GENDER	Male	708	49	6.9%	72	121	10.2%	39	160	5.5%
	Female	840	50	6.0%	67	117	8.0%	71	188	8.5%
	Unknown/Unreported	3	0	0.0%	0	0	0.0%	0	0	0.0%
ETHNICITY/RACE (per IPEDS categories)	Non-resident Alien	208	2	1.0%	8	10	3.8%	10	20	4.8%
	American Indian/Alaska Native	27	2	7.4%	3	5	11.1%	1	6	3.7%
	Asian/Pacific Islander	21	2	9.5%	2	4	9.5%	2	6	9.5%
	Black, non-Hispanic	41	6	14.6%	1	7	2.4%	0	7	0.0%
	Hispanic	808	41	5.1%	58	99	7.2%	48	147	5.9%
	White, non-Hispanic	389	42	10.8%	53	95	13.6%	45	140	11.6%
	Unknown/Unreported	57	4	7.0%	14	18	24.6%	4	22	7.0%
AGE GROUPINGS (per IPEDS categories)	Under 18	81	2	2.5%	11	13	13.6%	3	16	3.7%
	18-19	742	34	4.6%	64	98	8.6%	58	156	7.8%
	20-21	209	17	8.1%	26	43	12.4%	14	57	6.7%
	22-24	173	22	12.7%	19	41	11.0%	16	57	9.2%
	25-29	117	9	7.7%	6	15	5.1%	9	24	7.7%
	30-34	74	7	9.5%	5	12	6.8%	3	15	4.1%
	35-39	52	2	3.8%	4	6	7.7%	6	12	11.5%
	40-49	72	3	4.2%	2	5	2.8%	0	5	0.0%
	50-64	24	0	0.0%	1	1	4.2%	1	2	4.2%
	65+	6	2	33.3%	0	2	0.0%	0	2	0.0%
Unknown/Unreported	1	1	100.0%	1	2	100.0%	0	2	0.0%	
FULL-TIME/ PART-TIME	Full-time	738	59	8.0%	88	147	11.9%	56	203	7.6%
	Part-time	813	40	4.9%	51	91	6.3%	54	145	6.6%
CHALLENGES TO PERSISTENCE	Financial Need*	729	40	5.5%	55	95	7.5%	46	141	6.3%
	Developmental **	695	65	9.4%	79	144	11.4%	69	213	9.9%
	Limited English Proficient***	204	3	1.5%	2	5	1.0%	3	8	1.5%
	First Generation	776	50	6.4%	58	108	7.5%	48	156	6.2%
TOTAL STUDENT COUNT		1,551	99	4.3%	139	238	6.0%	110	348	4.7%

Note: Transfer data is based on National Student Clearinghouse data received July 9, 2008.

*Includes students who were awarded Pell or other grants that target students in financial need.

**Includes students who were enrolled in a developmental English, math, or reading class during a semester

***Limited English Proficient represents those students who were enrolled in an ESL class during a semester.



ARIZONA WESTERN COLLEGE

RETENTION, FALL 2007 FTSE* COHORT
FALL 2007 to SPRING 2008
(as of census day)

POPULATION		FALL 2007 FTSE* STUDENT COHORT	# OF FALL 2007 STUDENTS IN SPRING 2008	# OF GRADUATES IN FALL 2007 COHORT NOT ENROLLED IN SPRING 2008	FALL 2007 to SPRING 2008 RETENTION RATE
GENDER	Male	2,694	1,722	55	66%
	Female	4,133	2,827	83	70%
	Unknown/Unreported	126	83	0	66%
ETHNICITY/RACE <i>(per IPEDS categories)</i>	Non-resident Alien	792	601	18	78%
	American Indian/Alaska Native	131	63	1	49%
	Asian/Pacific Islander	148	105	5	74%
	Black, non-Hispanic	190	132	4	72%
	Hispanic	3,652	2,433	68	68%
	White, non-Hispanic	1,869	1,190	41	66%
	Unknown/Unreported	171	108	1	64%
AGE GROUPINGS <i>(per IPEDS categories)</i>	Under 18	546	335	0	61%
	18-19	1,843	1,459	4	79%
	20-21	1,175	775	35	69%
	22-24	864	548	30	67%
	25-29	798	478	27	63%
	30-34	479	289	16	64%
	35-39	416	268	12	67%
	40-49	503	296	8	60%
	50-64	275	146	6	55%
	65+	47	33	0	70%
	Unknown/Unreported	7	5	0	71%
STUDENT CHARACTERISTICS BY GROUPS	First-time Degree Seeking	1,245	841	0	68%
	Undeclared Majors	342	169	4	51%
	Financial Need**	2,937	2,317	53	81%
	Part-time Status	4,294	2,469	100	60%
	Full-time Status	2,659	2,163	38	83%
	Developmental***	2,163	1,516	0	70%
	Limited English Proficient****	570	410	0	72%
	First Generation	2,994	2,050	42	70%
TOTAL STUDENT COUNT		6,953	4,632	138	69%

Note: *FTSE: Full-Time Student Equivalent

**Includes students who were awarded Pell or other grants that target students in financial need.

***Includes students who were enrolled in a developmental English, math, or reading class during a semester

****Limited English Proficient represents those students who were enrolled in an ESL class during a semester.



ARIZONA WESTERN COLLEGE

PERSISTENCE, FIRST-TIME-DEGREE-SEEKING COHORT
COHORT: SPRING 2005
(as of census day)

POPULATION		# OF STUDENTS IN SPRING 2005 COHORT	PERSISTENCE RATES		
			FIRST YEAR	SECOND YEAR	THIRD YEAR
GENDER	Male	709	50.7%	32.6%	19.8%
	Female	840	59.9%	37.7%	26.0%
	Unknown/Unreported	3	100.0%	33.3%	33.3%
ETHNICITY/RACE <i>(per IPEDS categories)</i>	Non-resident Alien	208	64.4%	42.8%	27.4%
	American Indian/Alaska Native	27	44.4%	25.9%	7.4%
	Asian/Pacific Islander	21	42.9%	38.1%	9.5%
	Black, non-Hispanic	41	36.6%	17.1%	7.3%
	Hispanic	808	58.0%	39.2%	24.9%
	White, non-Hispanic	389	49.6%	27.5%	20.3%
	Unknown/Unreported	57	57.9%	24.6%	26.3%
AGE GROUPINGS <i>(per IPEDS categories)</i>	Under 18	81	63.0%	39.5%	35.8%
	18-19	742	66.4%	42.7%	27.0%
	20-21	209	49.8%	30.1%	19.1%
	22-24	173	37.6%	24.3%	15.0%
	25-29	117	45.3%	29.1%	23.1%
	30-34	74	47.3%	29.1%	23.1%
	35-39	52	48.1%	32.7%	17.3%
	40-49	72	43.1%	20.8%	18.1%
	50-64	24	29.2%	20.8%	0.0%
	65+	6	16.7%	16.7%	0.0%
	Unknown/Unreported	1	0.0%	0.0%	0.0%
STUDENT CHARACTERISTICS BY GROUPS	Financial Need*	729	66.5%	42.0%	26.5%
	Part-time Status	813	63.7%	38.1%	23.4%
	Full-time Status	738	48.6%	33.0%	22.9%
	Developmental**	695	59.6%	38.0%	25.2%
	Limited English Proficient***	204	62.7%	40.7%	31.9%
	First Generation	776	56.8%	36.3%	23.5%
TOTAL STUDENT COUNT		1,551	55.8%	35.4%	23.1%

Note: Report is based on FTSE (Full-Time Student Equivalent) data.

*Includes students who were awarded Pell or other grants that target students in financial need.

**Includes students who were enrolled in a developmental English, math, or reading class during a semester

***Limited English Proficient represents those students who were enrolled in an ESL class during a semester.



ARIZONA WESTERN COLLEGE

PERSISTENCE, FIRST-TIME-DEGREE-SEEKING COHORT
COHORTS: SPRING 2004, SPRING 2005, SPRING 2006, SPRING 2007, and SPRING 2008
(as of census day)

POPULATION			FIRST YEAR		SECOND YEAR		THIRD YEAR	
			GRADUATION RATE	PERSISTENCE RATE	GRADUATION RATE	PERSISTENCE RATE	GRADUATION RATE	PERSISTENCE RATE
SPRING 2004 COHORT	TOTAL	420	5.0%	34.5%	7.6%	26.0%	11.0%	16.2%
	Full-time	63	3.2%	50.8%	12.7%	33.3%	20.6%	15.9%
	Part-time	357	5.3%	31.7%	6.7%	24.6%	9.2%	16.2%
SPRING 2005 COHORT	TOTAL	1,551	2.8%	55.8%	8.4%	35.4%	15.9%	23.1%
	Full-time	738	3.8%	63.7%	12.9%	38.1%	23.8%	23.4%
	Part-time	813	2.0%	48.6%	4.3%	33.0%	8.7%	22.9%
SPRING 2006 COHORT	TOTAL	656	2.1%	40.1%	3.7%	27.1%	5.5%	*NA
	Full-time	198	0.0%	49.0%	3.5%	27.8%	6.1%	*NA
	Part-time	458	3.1%	36.2%	3.7%	26.9%	5.2%	N/A
SPRING 2007 COHORT	TOTAL	483	1.0%	35.0%	*NA	*NA	*NA	*NA
	Full-time	102	3.9%	49.0%	*NA	*NA	*NA	*NA
	Part-time	381	0.3%	31.2%	*NA	*NA	*NA	*NA
SPRING 2008 COHORT	TOTAL	688	*NA	*NA	*NA	*NA	*NA	*NA
	Full-time	227	*NA	*NA	*NA	*NA	*NA	*NA
	Part-time	461	*NA	*NA	*NA	*NA	*NA	*NA

Note: *Data is not yet available.

