



Spring 2007 Standard Reports

The Office of Institutional Effectiveness, Research, and Grants

Mary Schaal, Director

Hongtao Yue, Sr. Research Analyst

Betty Lopez, Sr. Secretary

TABLE OF CONTENTS

Table of Contents	1-2
Full-Time Student Equivalent (FTSE)	
Location and Division, <i>Fall 2006 and Spring 2007</i>	3
Enrollment	
Fall 2006 and Spring 2007.....	4
Trends, <i>Spring 2001 to Spring 2007</i>	5
Spring to Spring: <i>Unduplicated Headcount and FTSE, 2001 to 2007</i>	6
Spring to Spring: <i>Unduplicated Headcount by Age, 2001 to 2007</i>	7
Spring to Spring: <i>Unduplicated Headcount by Special Populations, 2001 to 2007</i>	8
Trends, <i>Fall 1999 to Fall 2006</i>	9
Fall to Fall: <i>Unduplicated Headcount and FTSE, 1997 to 2006</i>	10
Fall to Fall: <i>Unduplicated Headcount by Age, 1999 to 2006</i>	11
Fall to Fall: <i>Unduplicated Headcount by Special Populations, 2000 to 2006</i>	12
Student Performance	
Transfer Rates, <i>Fall 2003 Cohort</i>	13
Retention, <i>FTSE Cohort</i>	
Fall 2006 to Spring 2007.....	14

Retention Four-Year Comparison, *FTSE Cohort*
 Academic Years: *03/04, 04/05, 05/06, and 06/07*..... 15

Overall Retention Four-Year Comparison and Retention Four-Year Comparison by Gender
 Academic Years: *03/04, 04/05, 05/06, and 06/07*..... 16

Retention Four-Year Comparison by Ethnicity/Race
 Academic Years: *03/04, 04/05, 05/06, and 06/07*..... 17

Retention Four-Year Comparison by Age
 Academic Years: *03/04, 04/05, 05/06, and 06/07*..... 18

Retention Four-Year Comparison by Special Populations
 Academic Years: *03/04, 04/05, 05/06, and 06/07*..... 19

FTSE: Fall 2006

Sum of FTSE	DIVISION							
Location	BUD	CMD	DOI	HSD	MLD	SFD	SMD	Grand Total
Main Campus	331	398	4	360	232	726	620	2670
MCAS Yuma		2				23	3	28
Parker	1	4		8	2	12	9	37
Quartzsite				1				1
San Luis	11	109		22	111	66	50	370
Somerton	24	63		17	42	31	58	234
Wellton		2			1	3		6
Yuma - Other Than Main Campus	12	9		28	10	100	16	177
Grand Total	379	588	4	436	398	962	756	3522

FTSE: Spring 2007

Sum of FTSE	DIVISION							
Location	BUD	CMD	DOI	HSD	MLD	SFD	SMD	Grand Total
Main Campus	320	355	8	361	194	605	648	2490
MCAS Yuma		1				5	2	9
Parker	1	5		10	4	6	6	32
San Luis	30	108		26	94	38	66	362
Somerton	16	43		18	40	21	43	181
Wellton	0	2				0	2	4
Yuma - Other Than Main Campus	14	9		33	13	59		128
Grand Total	382	524	8	448	344	734	767	3206

Note: *This report is based on the FTSE data provided after the 45th day, which only includes all standard courses.

POPULATION	ENROLLMENT			
	Fall 2006	% of Fall Total	Spring 2007	% of Spring Total
GRAND TOTAL	6,579	100.0%	6,201	100.0%
Male	2,552	38.8%	2,366	38.2%
Female	3,987	60.6%	3,783	61.0%
Unknown	40	0.6%	52	0.8%
Non-resident Alien	791	12.0%	739	11.9%
Am Indian or Alaska Nat	122	1.9%	115	1.9%
Asian	148	2.2%	145	2.3%
Black or African American	181	2.8%	176	2.8%
Hispanic or Latino	3,322	50.5%	3117	50.3%
White	1,853	28.2%	1,754	28.3%
Unknown/Other	162	2.5%	155	2.5%
Average Age	26		27	
Median Age	21		22	
<i>Student Characteristics by Groups*</i>				
First-time Degree Seeking	1,132	17.2%	483	7.8%
Need-based Financial Aid	2,313	35.2%	2,324	37.5%
Developmental Students	2,133	32.4%	1,889	30.5%
ESL Students	587	8.9%	501	8.1%
Part-time Status**	3,986	60.6%	4,058	65.4%
Undeclared Major	431	6.6%	404	6.5%
First Generation	2373	36.1%	2318	37.4%

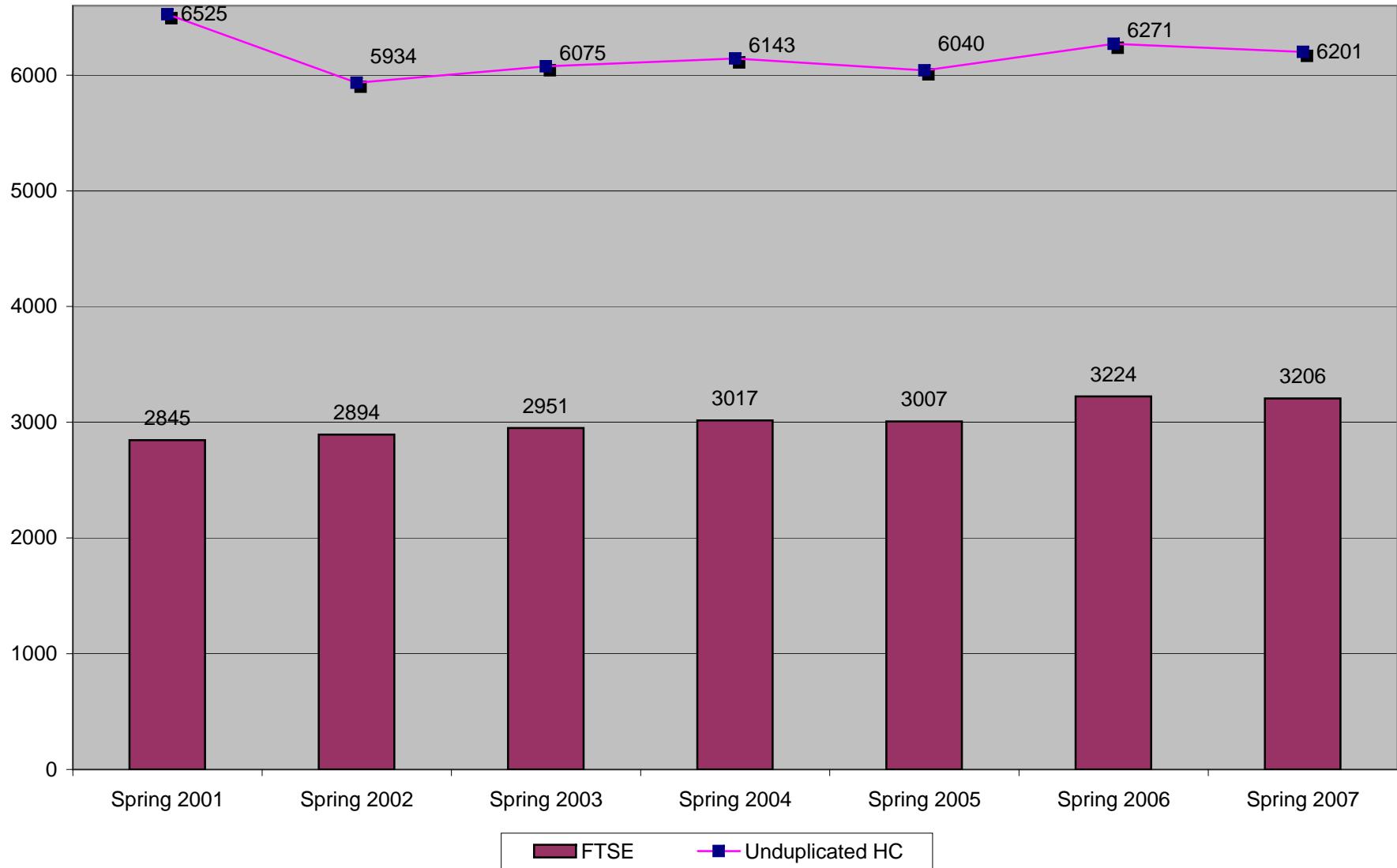
*Membership within groups is unduplicated, but membership between groups is not mutually exclusive.

**Registered for fewer than 12 credits in fall or spring or <24 credits in year; see comment box for other definitions of part-time.

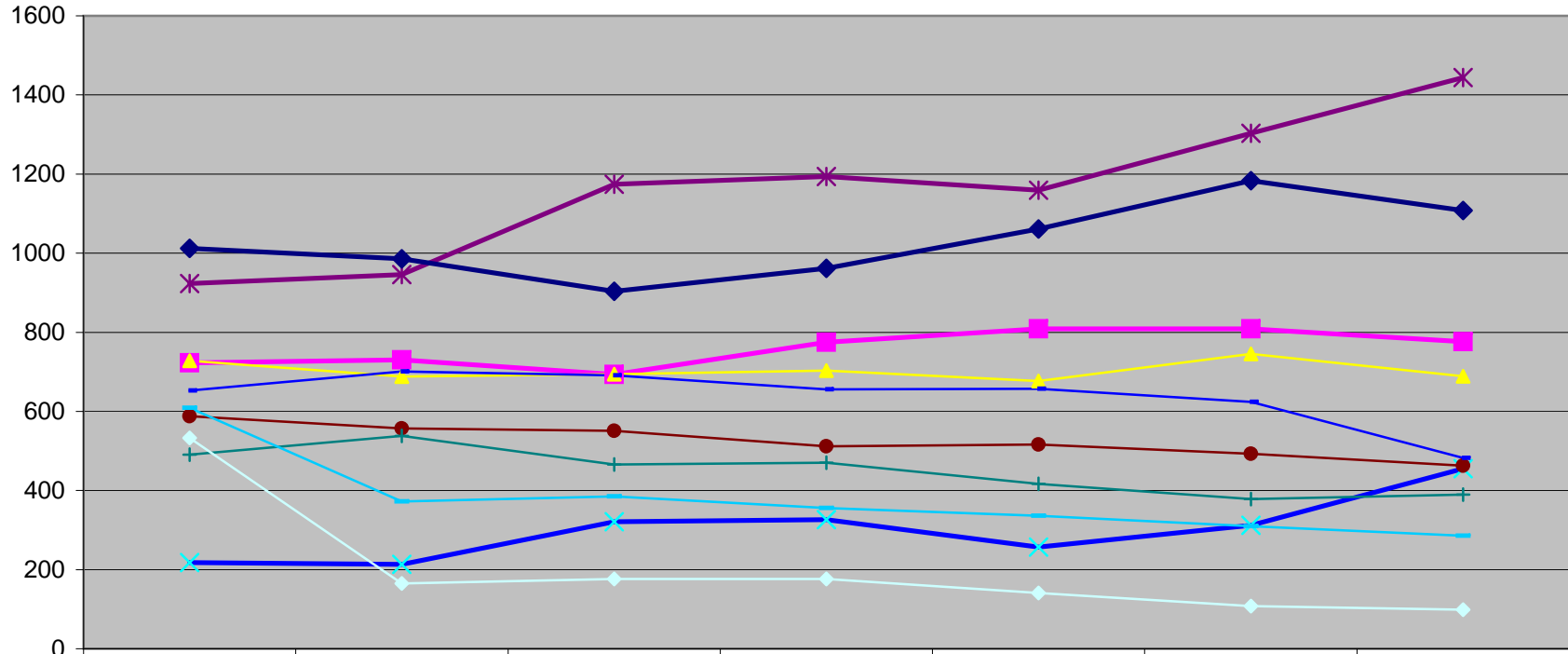
***Enrollment Data is based upon FTSE data as provided after the 45th Day.

ENROLLMENT							
SPRING to SPRING	Spring 2001	Spring 2002	Spring 2003	Spring 2004	Spring 2005	Spring 2006	Spring 2007
FTSE	2845	2894	2951	3017	3007	3224	3206
GRAND TOTAL	6525	5934	6075	6143	6040	6271	6201
Female	3996	3561	3648	3690	3633	3772	3783
Male	2490	2350	2339	2386	2402	2467	2366
Unknown	39	23	88	67	5	32	52
<i>Ethnicity</i>							
Non-resident Alien	26	10	18	23	76	710	739
American Indian or Alaska Native	113	132	111	134	120	119	115
Asian	89	77	99	101	87	111	145
Black or African American	156	165	157	172	142	161	176
Hispanic or Latino	3335	3323	3426	3507	3546	3139	3117
Unknown/Other	187	319	197	157	192	159	155
White	2619	1908	2067	2049	1877	1872	1754
<i>Age Groupings per IPEDS Categories</i>							
Under 18	218	213	321	326	257	312	455
18 - 19	923	946	1174	1194	1159	1303	1444
20 - 21	1012	986	904	962	1061	1183	1108
22 - 24	723	730	693	775	809	809	779
25 - 29	728	688	694	703	677	745	689
30 - 34	588	557	551	512	516	493	463
35 - 39	491	538	466	470	417	378	390
40 - 49	653	701	691	656	657	624	482
50 - 64	609	372	385	356	336	310	286
65 - Older	533	165	176	176	141	108	99
Age Unknown/Unreported	47	38	20	13	10	6	6
Average Age	32	30	30	29	29	28	27
Median Age	27	25	24	24	23	22	22
<i>Student Characteristics by Groups**</i>							
First-Time Degree Seeking			532	526	817	656	483
Need-Based Financial Aid	1795	2038	1903	2130	2005	2211	2324
Developmental Students	1210	1348	1360	1576	1636	1957	1889
ESL Students	771	898	844	651	1101	677	501
Full-Time	1245	2023	1487	1485	1290	2165	2143
Part-Time	5190	3911	4588	4658	4570	4106	4058
Undeclared Majors			2154	1079	673	580	404
First Generation					1287	2135	2318

Spring to Spring Enrollment: Unduplicated Head Count (HC) and Full-Time Student Equivalent (FTSE)

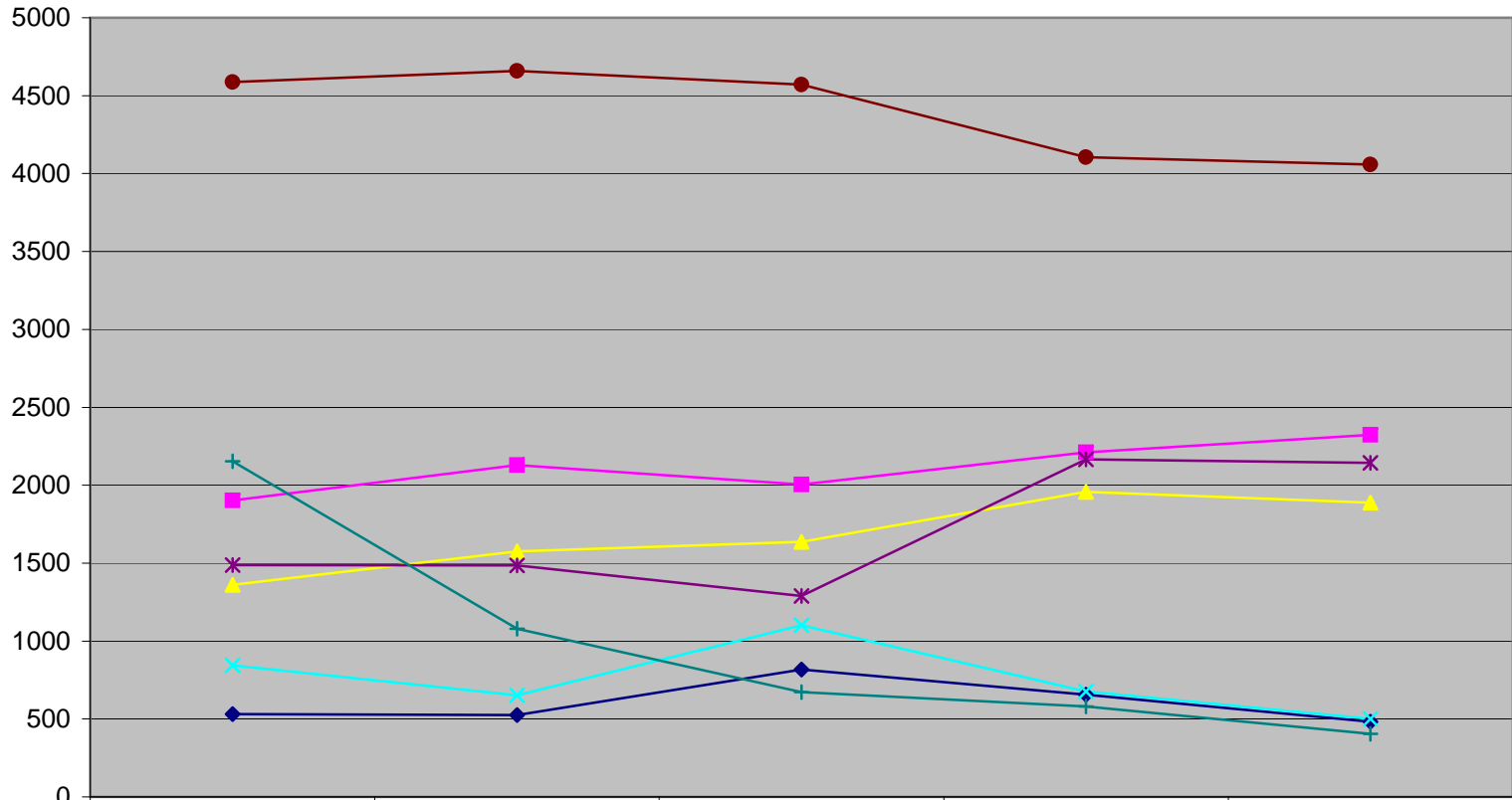


Spring to Spring Enrollment: Unduplicated Head Count and Full-Time Student Equivalent (FTSE), by Age



	Spring 2001	Spring 2002	Spring 2003	Spring 2004	Spring 2005	Spring 2006	Spring 2007
Under 18	218	213	321	326	257	312	455
18 - 19	923	946	1174	1194	1159	1303	1444
20 - 21	1012	986	904	962	1061	1183	1108
22 - 24	723	730	693	775	809	809	776
25 - 29	728	688	694	703	677	745	689
30 - 34	588	557	551	512	516	493	463
35 - 39	491	538	466	470	417	378	390
40 - 49	653	701	691	656	657	624	482
50 - 64	609	372	385	356	336	310	286
65+	533	165	176	176	141	108	99

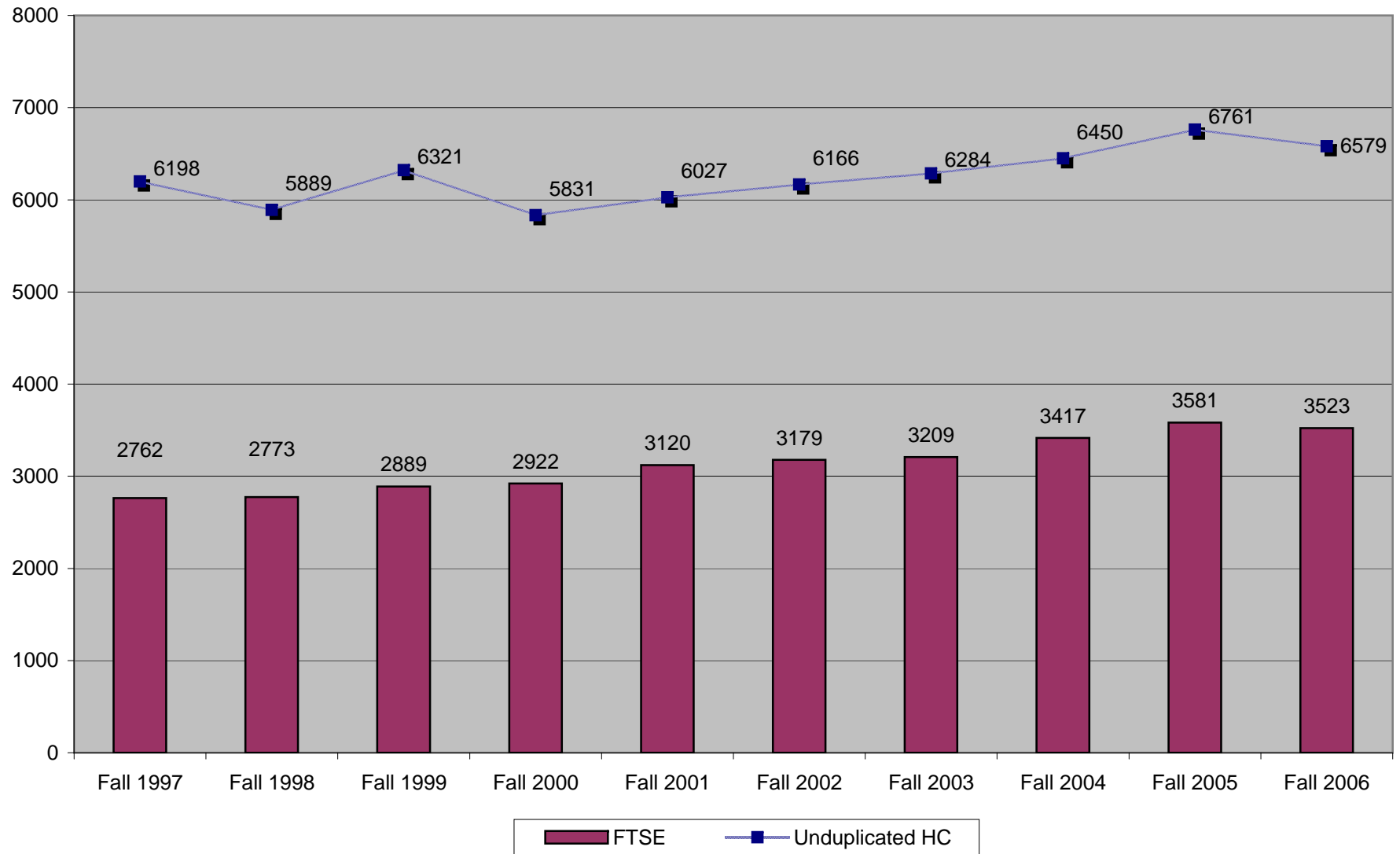
Spring to Spring Enrollment: Unduplicated Head Count, by Special Populations



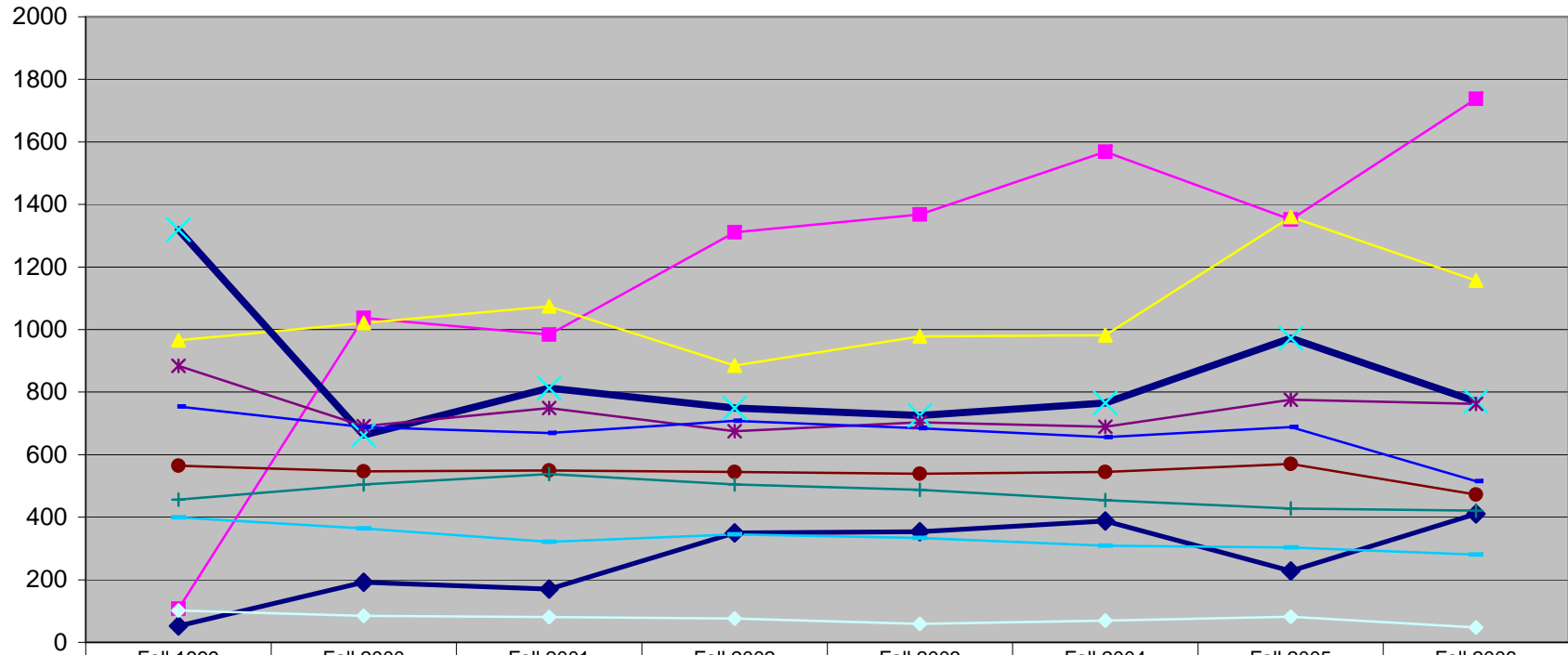
	Spring 2003	Spring 2004	Spring 2005	Spring 2006	Spring 2007
◆ First Time Degree Seeking	532	526	817	656	483
■ Need-Based Financial Aid	1903	2130	2005	2211	2324
▲ Developmental Students	1360	1576	1636	1957	1889
✕ ESL Students	844	651	1101	677	501
* Full-Time	1487	1485	1290	2165	2143
● Part-Time	4588	4658	4570	4106	4058
+ Undeclared Majors	2154	1079	673	580	404

ENROLLMENT								
FALL to FALL	Fall 1999	Fall 2000	Fall 2001	Fall 2002	Fall 2003	Fall 2004	Fall 2005	Fall 2006
FTSE	2889	2922	3120	3179	3209	3417	3581	3523
GRAND TOTAL	6321	5831	6027	6166	6284	6450	6761	6579
Female	3785	3513	3637	3753	3770	3868	4024	3987
Male	2536	2313	2334	2394	2496	2529	2709	2552
Unknown	0	5	56	19	18	53	28	40
<i>Ethnicity</i>								
Non-Resident Alien	5	11	27	8	22	36	687	791
American Indian or Alaska Native	138	129	147	141	143	140	127	122
Asian	138	88	88	98	108	104	103	148
Black or African American	193	190	188	180	173	184	186	181
Hispanic or Latino	3306	3312	3473	3501	3630	3877	3558	3322
Unknown/Other	118	110	239	227	167	144	169	162
White	2423	1991	1865	2011	2041	1965	1931	1853
<i>Age Groupings per IPEDS Categories</i>								
Under 18	52	192	170	350	354	388	228	411
18 - 19	107	1037	984	1311	1368	1568	1352	1,738
20 - 21	966	1021	1074	885	978	982	1360	1,157
22 - 24	1319	663	813	749	725	765	972	770
25 - 29	884	691	749	675	703	689	776	762
30 - 34	565	547	549	545	539	545	570	472
35 - 39	456	505	538	505	488	454	428	421
40 - 49	754	688	669	708	684	656	688	515
50 - 64	399	364	321	345	334	309	303	280
65 - Older	102	85	81	76	59	69	82	48
Age Unknown/Unreported	109	38	79	17	94	25	2	5
Average Age	31	29	29	28	28	27	28	26
Median Age		24	24	23	23	22	23	21
<i>Student Characteristics by Groups**</i>								
First-time Degree Seeking		718	838	772	807	1186	1513	1132
Need-Based Financial Aid		1921	2136	2159	2390	2228	2319	2313
Developmental Students		1439	1578	1285	1682	1613	2456	2133
ESL Students		959	989	850	729	707	790	587
Full-Time	1787	1415	2180	1713	1668	1896	2436	2593
Part-Time	4534	4416	3847	4453	4616	4554	4325	3986
Undeclared Majors		2905	2461	2429	1537	851	685	431
First Generation								2373

Fall to Fall Enrollment: Unduplicated Head Count (HC) and Full-Time Student Equivalent (FTSE)

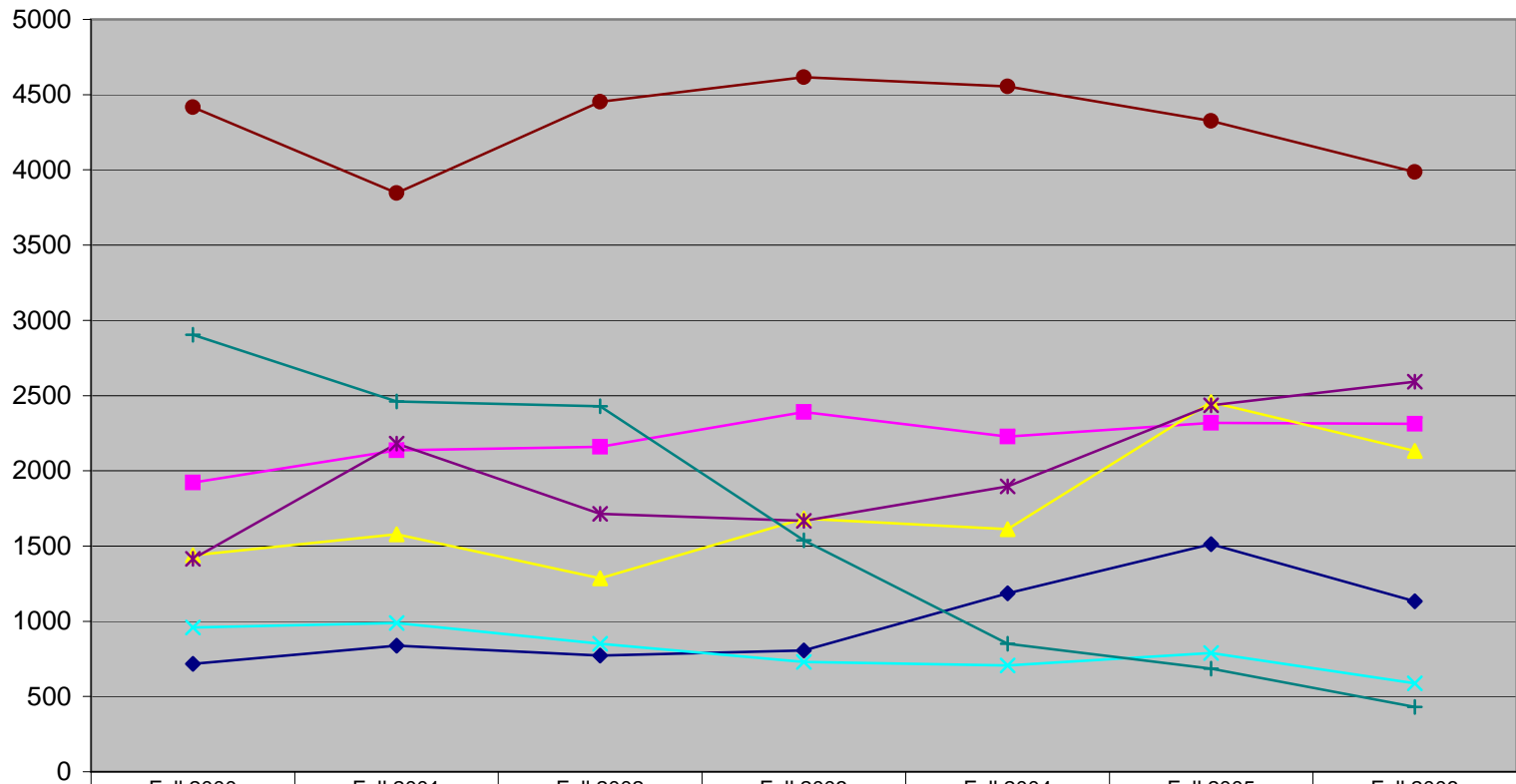


Fall to Fall Enrollment: Unduplicated Head Count, by Age



	Fall 1999	Fall 2000	Fall 2001	Fall 2002	Fall 2003	Fall 2004	Fall 2005	Fall 2006
Under 18	52	192	170	350	354	388	228	411
18 - 19	107	1037	984	1311	1368	1568	1352	1738
20 - 21	966	1021	1074	885	978	982	1360	1157
22 - 24	1319	663	813	749	725	765	972	770
25 - 29	884	691	749	675	703	689	776	762
30 - 34	565	547	549	545	539	545	570	472
35 - 39	456	505	538	505	488	454	428	421
40 - 49	754	688	669	708	684	656	688	515
50 - 64	399	364	321	345	334	309	303	280
65+	102	85	81	76	59	69	82	48

Fall to Fall Enrollment : Unduplicated Head Count, by Special Populations



	Fall 2000	Fall 2001	Fall 2002	Fall 2003	Fall 2004	Fall 2005	Fall 2006
◆ First Time Degree Seeking	718	838	772	807	1186	1513	1132
■ Need-Based Financial Aid	1921	2136	2159	2390	2228	2319	2313
▲ Developmental Students	1439	1578	1285	1682	1613	2456	2133
✕ ESL Students	959	989	850	729	707	790	587
✱ Full-Time	1415	2180	1713	1668	1896	2436	2593
● Part-Time	4416	3847	4453	4616	4554	4325	3986
+ Undeclared Majors	2905	2461	2429	1537	851	685	431

POPULATION	# OF STUDENTS IN FALL 2003 COHORT	Transfer Rates							
		First Year		Second Year			Third Year		
		TOTAL # OF TRANSFER STUDENTS IN AY 03-04	FIRST YEAR RATE	TOTAL # OF TRANSFER STUDENTS IN AY 04-05	ACCUMULATIVE # OF TRANSFER STUDENTS IN AY 03-05	SECOND YEAR RATE	TOTAL # OF TRANSFER STUDENTS IN AY 05-06	ACCUMULATIVE # OF TRANSFER STUDENTS IN AY 03-06	THIRD YEAR RATE
GRAND TOTAL	1,346	78	5.8%	88	166	12.3%	58	224	16.6%
Full-Time	525	44	8.4%	65	109	20.8%	29	138	26.3%
Part-Time	821	34	4.1%	23	57	6.9%	29	86	10.5%
Male	629	35	5.6%	43	78	12.4%	29	107	17.0%
Female	707	42	5.9%	45	87	12.3%	28	115	16.3%
Unknown	10	1	10.0%	0	1	10.0%	1	2	20.0%
Ethnicity									
Non-resident Alien	19	0	0.0%	3	3	15.8%	0	3	15.8%
Am Indian or Alaska Nat	36	6	16.7%	3	9	25.0%	1	10	27.8%
Asian	24	1	4.2%	3	4	16.7%	0	4	16.7%
Black or African American	68	14	20.6%	9	23	33.8%	3	26	38.2%
Hispanic or Latino	811	20	2.5%	41	61	7.5%	35	96	11.8%
White	354	34	9.6%	27	61	17.2%	18	79	22.3%
Unknown/Other	34	3	8.8%	2	5	14.7%	1	6	17.6%
Age Groupings per IPEDS Categories									
Under 18	140	6	4.3%	9	15	10.7%	6	21	15.0%
18-19	652	40	6.1%	54	94	14.4%	34	128	19.6%
20-21	140	5	3.6%	12	17	12.1%	6	23	16.4%
22-24	110	11	10.0%	3	14	12.7%	5	19	17.3%
25-29	95	9	9.5%	5	14	14.7%	3	17	17.9%
30-34	67	2	3.0%	3	5	7.5%	1	6	9.0%
35-39	51	2	3.9%	2	4	7.8%	1	5	9.8%
40-49	63	1	1.6%	0	1	1.6%	2	3	4.8%
50-64	16	2	12.5%	0	2	12.5%	0	2	12.5%
65-Older	5	0	0.0%	0	0	0.0%	0	0	0.0%
Age Unknown/Unreported	7	0	0.0%	0	0	0.0%	0	0	0.0%
BARRIERS/CHALLENGES TO PERSISTENCE									
Financial Need*	650	32	4.9%	45	77	11.8%	26	103	15.8%
Developmental**	684	39	5.7%	52	91	13.3%	31	122	17.8%
Limited English Proficient***	187	1	0.5%	0	1	0.5%	1	2	1.1%
First Generation	114	6	5.3%	5	11	9.6%	3	14	12.3%

*Includes those who were awarded Pell or other grants that target students in financial need

**Includes those who were enrolled in a developmental English, math or reading class during the semester.

***LEP represents those who were enrolled in an ESL class during the semester.

****The cohort is based upon FTSE data as provided after the 45th Day. The transfer data is from National Student Clearing House received at 02/20/07.

POPULATION	RETENTION (FTSE Enrollment As Cohort)				
	# OF STUDENTS IN FALL 2006 COHORT	# OF FALL 2006 COHORT IN SPRING 2007	# OF GRADUATES IN COHORT AND NOT ENROLLED IN SPRING 2007	FALL TO SPRING RETENTION RATE	# OF STUDENTS IN SPRING 2007 COHORT
GRAND TOTAL	6,579	4,224	118	66.0%	6,201
Male	2,552	1,583	52	64.1%	2,366
Female	3,987	2,619	66	67.3%	3,783
Unknown	40	22	0	55.0%	52
Non-resident Alien	791	578	9	74.2%	739
Am Indian or Alaska Nat	122	61	0	50.0%	115
Asian	148	104	1	70.9%	145
Black or African American	181	122	2	68.5%	176
Hispanic or Latino	3,322	2,189	57	67.6%	3,117
White	1,853	1,071	46	60.3%	1,754
Unknown/Other	162	99	3	63.0%	155
Under 18	411	249	0	60.6%	455
18-19	1,738	1,312	10	76.1%	1,444
20-21	1,157	773	28	69.2%	1,108
22-24	770	476	21	64.5%	779
25-29	762	431	19	59.1%	689
30-34	472	277	23	63.6%	463
35-39	421	242	6	58.9%	390
40-49	515	287	8	57.3%	482
50-64	280	141	2	51.1%	286
65-Older	48	34	0	70.8%	99
Age Unknown/Unreported	5	2	1	60.0%	6
BARRIERS/CHALLENGES TO RETENTION					
First-Time Degree Seeking	1132	726	14	65.4%	483
Undeclared	431	226	5	53.6%	404
Financial Need*	2,313	1,842	32	81.0%	2,324
Part-Time Status	3,986	2,189	88	57.1%	4,058
Full-Time Status	2,593	2,035	30	79.6%	2,143
Developmental**	2,133	1,498	4	70.4%	1,889
Limited English Proficient***	587	400	1	68.3%	501
First Generation	2373	1354	24	58.1%	2318

Suggested target rate for fall to fall retention is based on the national average for 2-year public sector institutions of higher education "Stop-out" or "Stay-out" undergraduates who leave college in their first year, NCES Statistical Analysis Report, Sept.

*Includes those who were awarded Pell or other grants that target students in financial need

**Includes those who were enrolled in a developmental English, math or reading class during the semester.

***LEP represents those who were enrolled in an ESL class during the semester.

****These Retention Reports are based upon FTSE data as provided after the 45th Day.

POPULATION	RETENTION (FTSE ENROLLMENT as COHORT)											
	AY2003-04			AY2004-05			AY2005-06			AY2006-07		
	FALL TO SPRING	SPRING TO FALL	FALL TO FALL	FALL TO SPRING	SPRING TO FALL	FALL TO FALL	FALL TO SPRING	SPRING TO FALL	FALL TO FALL	FALL TO SPRING	SPRING TO FALL	FALL TO FALL
GRAND TOTAL	65.3%	56.8%	51.8%	65.8%	58.5%	52.1%	63.7%	57.9%	50.1%	66.0%		
Male	61.7%	52.9%	46.8%	63.6%	54.7%	50.0%	61.5%	54.8%	47.2%	64.1%		
Female	67.5%	59.5%	55.1%	67.2%	61.0%	53.5%	65.3%	60.1%	52.1%	67.3%		
Unknown	0.0%	47.8%	72.2%	0.0%	62.5%	0.0%	42.9%	31.3%	32.1%	55.0%		
Nonresident Alien	75.9%	100.0%	51.7%	78.8%	67.7%	48.5%	77.1%	69.9%	63.2%	74.2%		
Am Indian or Alaska Nat	60.8%	52.2%	42.0%	57.9%	52.5%	42.9%	57.5%	47.1%	39.4%	50.0%		
Asian	63.2%	51.5%	44.3%	68.0%	45.3%	46.0%	64.1%	57.7%	51.5%	70.9%		
Black or African American	60.1%	59.3%	46.8%	56.0%	53.5%	37.0%	64.0%	50.3%	39.8%	68.5%		
Hispanic or Latino	69.2%	61.9%	56.4%	68.2%	62.4%	55.5%	64.0%	60.3%	50.7%	67.6%		
White	59.1%	49.1%	45.4%	61.7%	51.4%	47.9%	58.8%	51.1%	46.5%	60.3%		
Unknown/Other	65.2%	48.9%	51.3%	68.9%	53.7%	50.8%	60.9%	52.2%	43.2%	63.0%		
Under 18	60.6%	45.4%	43.9%	61.2%	52.0%	49.2%	53.5%	51.9%	48.7%	60.6%		
18-19	77.0%	66.9%	61.5%	75.2%	69.2%	62.1%	76.3%	66.2%	59.4%	76.1%		
20-21	70.1%	62.2%	56.1%	66.6%	66.0%	53.6%	70.6%	64.9%	56.0%	69.2%		
22-24	60.6%	55.6%	48.3%	62.2%	56.5%	49.2%	58.2%	57.1%	46.4%	64.5%		
25-29	59.2%	52.1%	46.1%	61.7%	55.1%	48.8%	62.0%	55.8%	47.3%	59.1%		
30-34	61.2%	58.4%	50.5%	62.2%	59.9%	50.1%	57.4%	56.6%	45.1%	63.6%		
35-39	63.9%	60.2%	50.0%	65.0%	57.1%	51.5%	58.4%	57.7%	47.4%	58.9%		
40-49	61.1%	58.2%	51.3%	62.5%	55.5%	48.6%	58.9%	49.4%	42.2%	57.3%		
50-64	50.0%	39.9%	36.2%	57.0%	36.6%	32.4%	44.9%	42.3%	39.9%	51.1%		
65-Older	61.1%	21.6%	44.2%	58.9%	19.0%	40.0%	31.7%	19.4%	26.8%	70.8%		
Age Unknown/Unreported	47.1%	38.5%	52.9%	38.5%	28.6%	30.8%	50.0%	16.7%	0.0%	60.0%		
STUDENT CHARACTERISTICS BY GROUPS												
First-Time Degree Seeking	68.1%	43.3%	51.3%	68.4%	61.6%	52.7%	67.7%	46.3%	46.8%	65.4%		
Undeclared Major	53.9%	26.6%	39.9%	51.7%	19.5%	37.7%	59.7%	56.8%	53.7%	53.6%		
Need-based Financial Aid*	84.3%	70.5%	65.6%	81.3%	93.6%	62.3%	80.9%	68.6%	61.5%	81.0%		
Part-Time Status	58.2%	52.7%	46.0%	58.7%	51.3%	46.5%	54.2%	50.9%	42.7%	57.1%		
Full-Time Status	85.2%	77.7%	68.2%	83.7%	72.7%	66.2%	80.5%	71.1%	63.2%	79.6%		
Developmental**	73.8%	62.1%	57.5%	69.3%	60.7%	53.8%	67.6%	60.5%	52.4%	70.4%		
Limited English Proficient***	73.5%	64.1%	56.4%	73.1%	61.5%	51.8%	70.8%	61.0%	49.2%	68.3%		
First Generation	55.7%	36.2%	36.2%	63.6%	52.3%	48.4%	64.2%	55.8%	48.4%	58.1%		

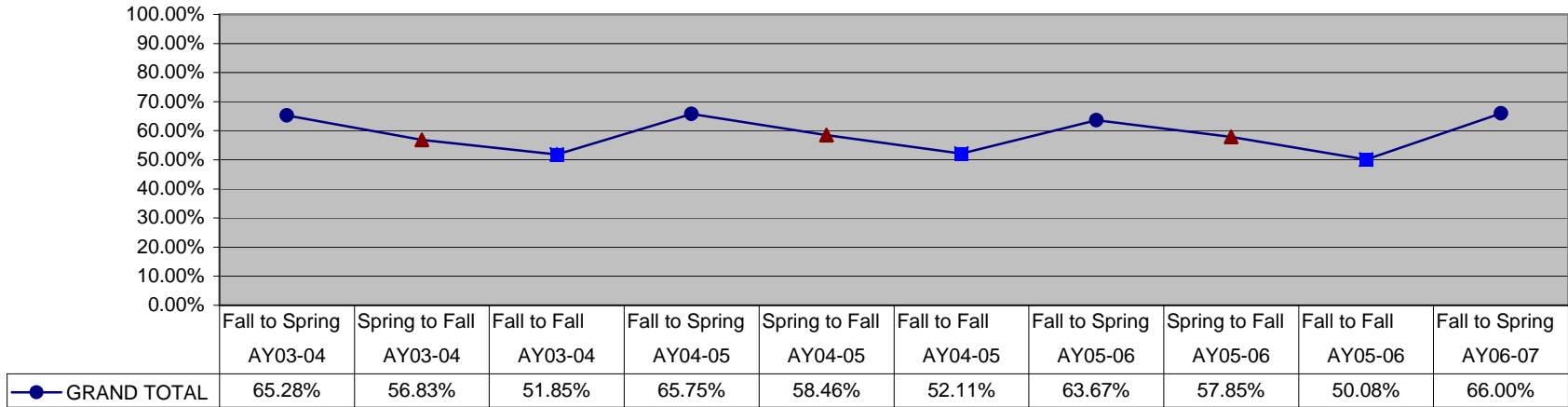
*Includes those who were awarded Pell or other grants that target students in financial need

**Includes those who were enrolled in a developmental English, math or reading class during the semester.

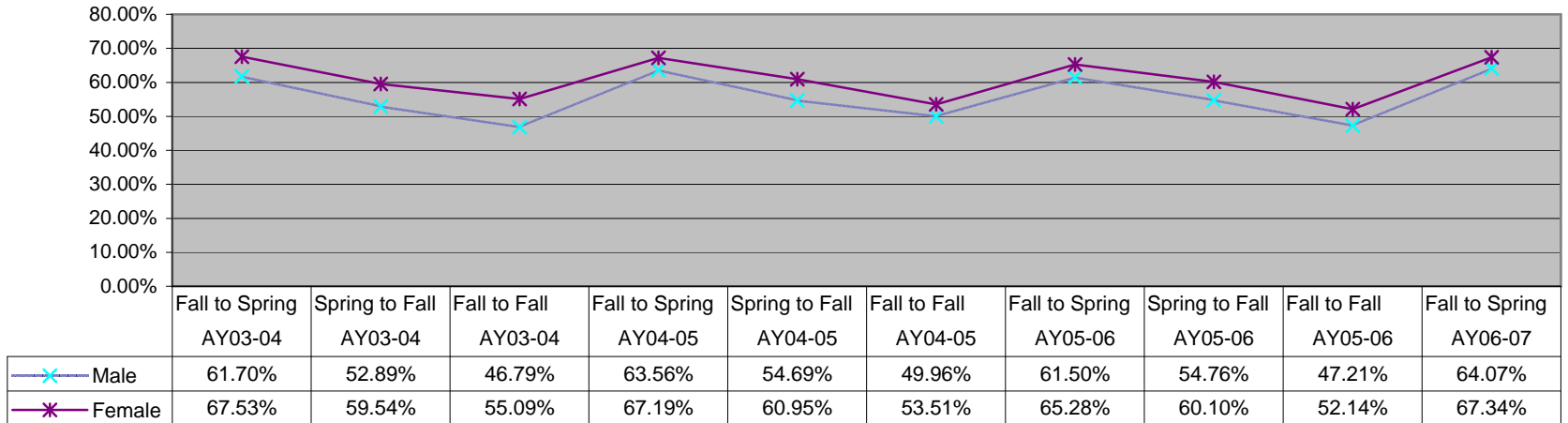
***LEP represents those who were enrolled in an ESL class during the semester.

****These Retention Reports are based upon FTSE data as provided after the 45th Day.

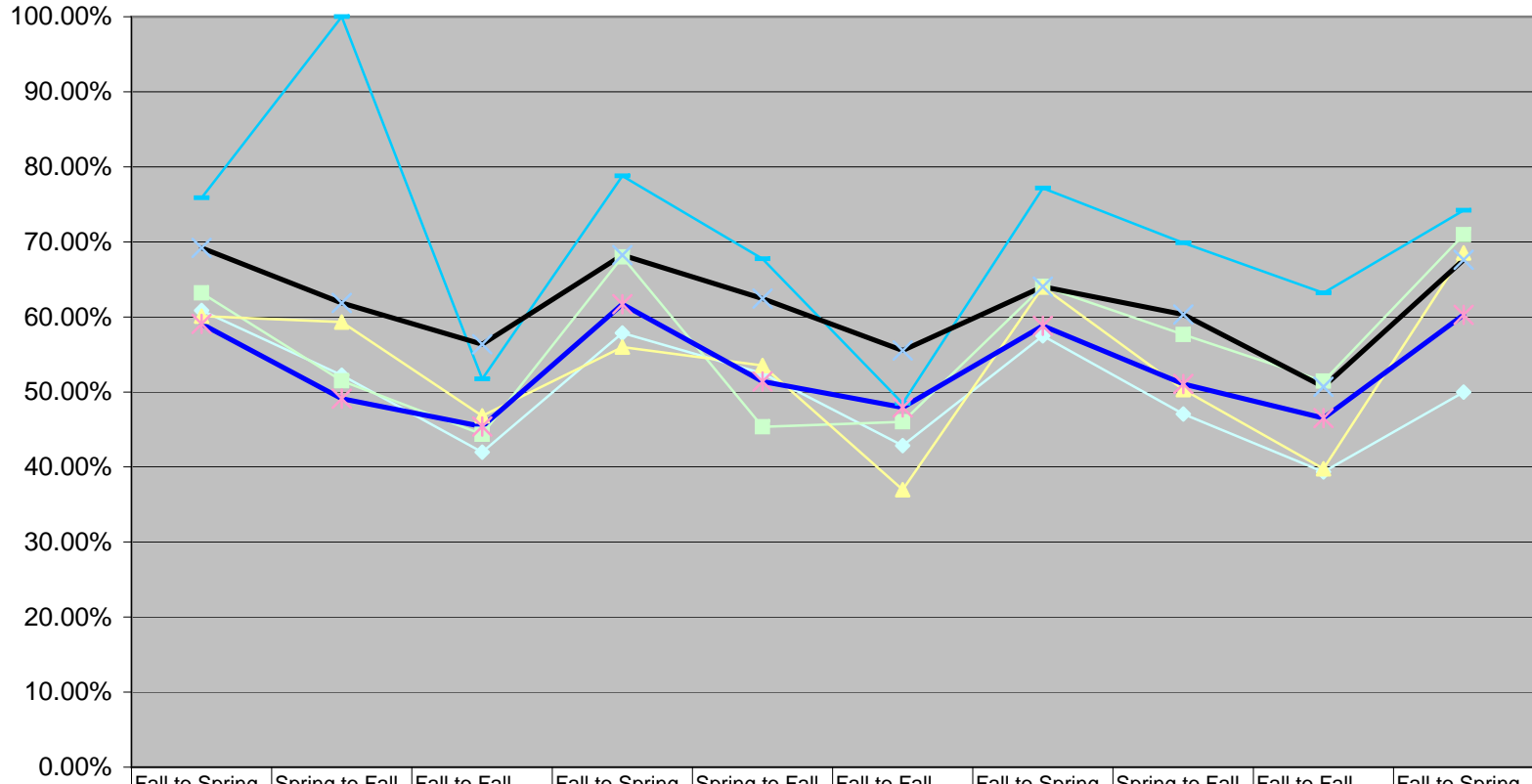
Overall Retention Rates



Retention Rates, by Gender

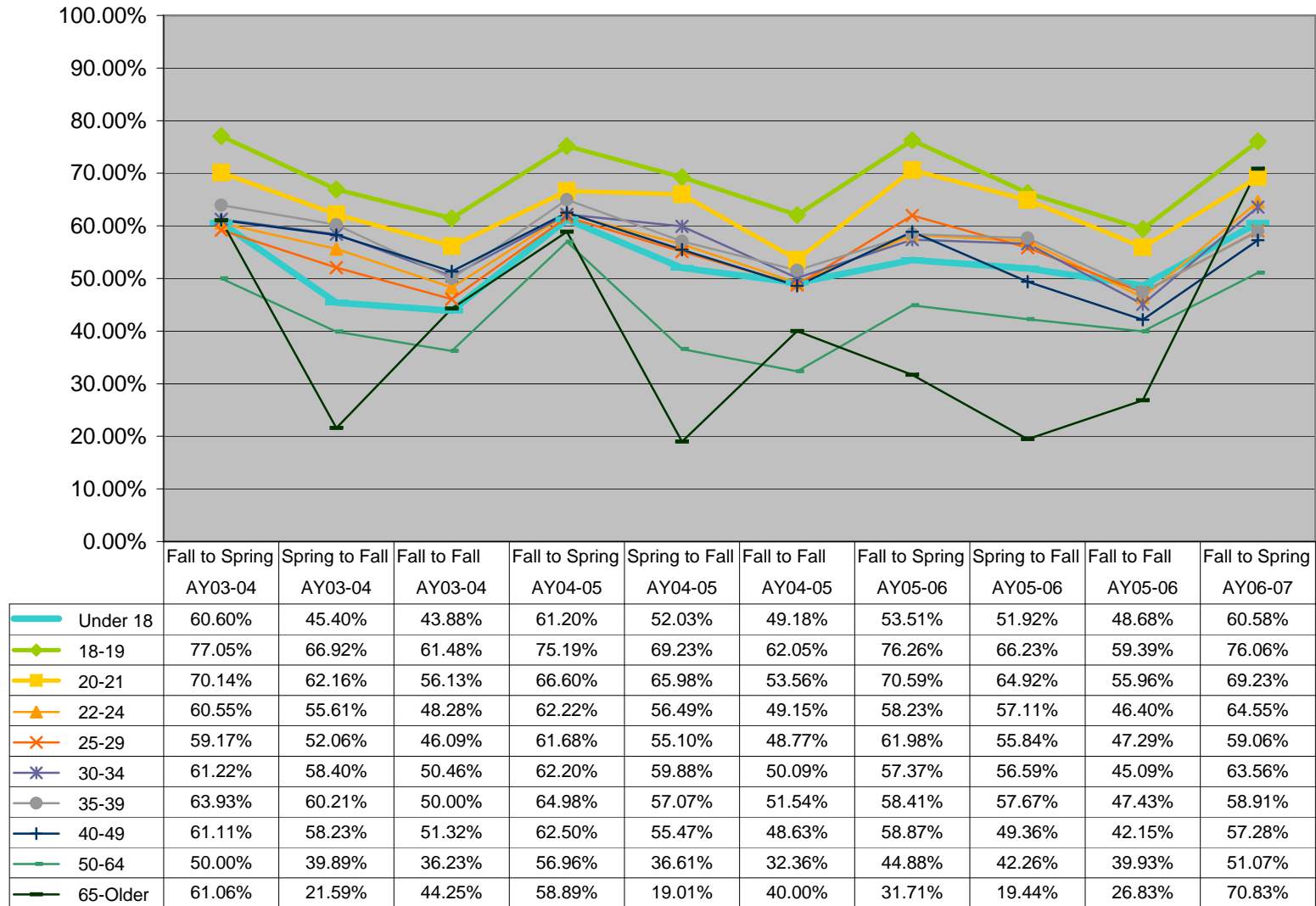


Retention Rates, by Ethnicity

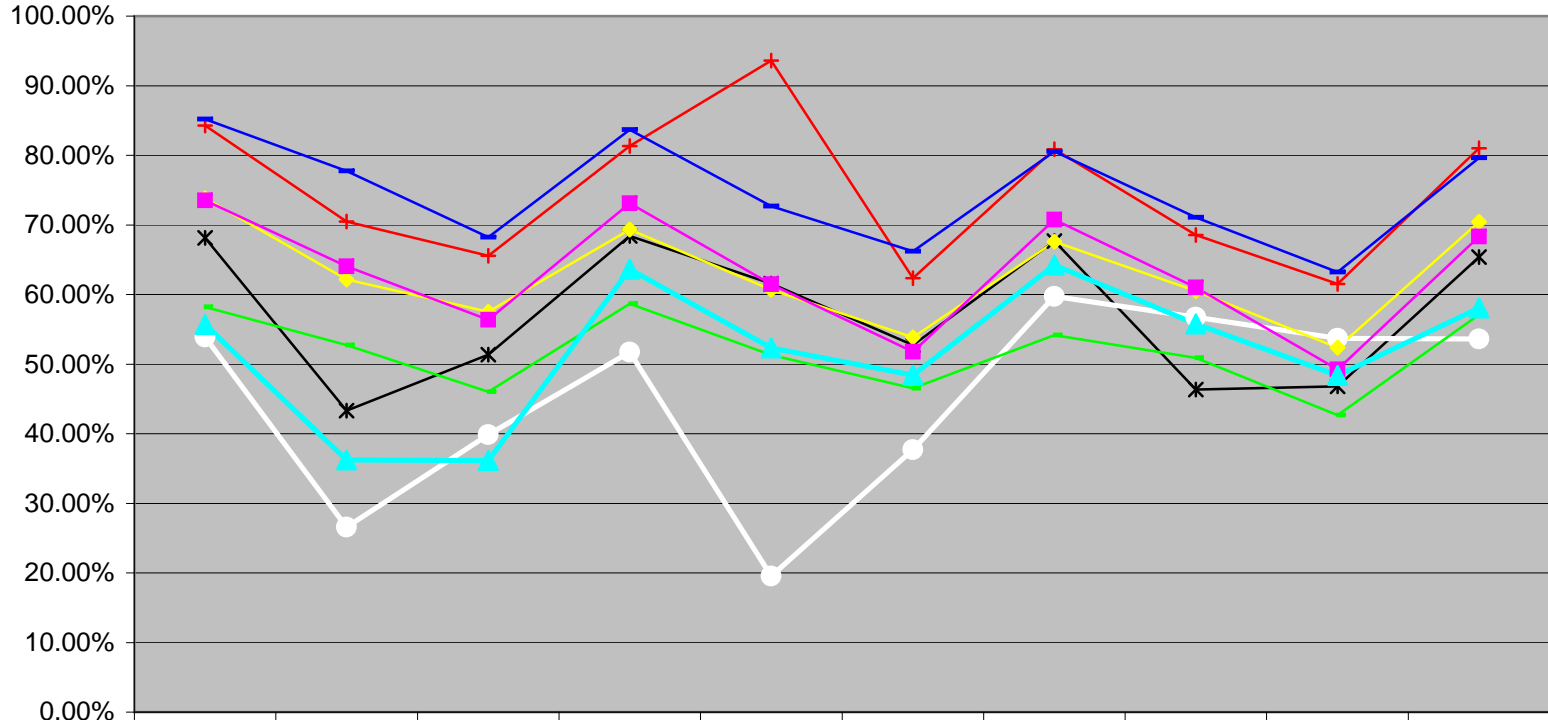


	Fall to Spring AY03-04	Spring to Fall AY03-04	Fall to Fall AY03-04	Fall to Spring AY04-05	Spring to Fall AY04-05	Fall to Fall AY04-05	Fall to Spring AY05-06	Spring to Fall AY05-06	Fall to Fall AY05-06	Fall to Spring AY06-07
Non-resident Alien	75.86%	100.00%	51.72%	78.79%	67.72%	48.48%	77.15%	69.86%	63.17%	74.21%
Am Indian or Alaska Nat	60.84%	52.24%	41.96%	57.86%	52.50%	42.86%	57.48%	47.06%	39.37%	50.00%
Asian	63.21%	51.49%	44.34%	68.00%	45.35%	46.00%	64.08%	57.66%	51.46%	70.95%
Black or African American	60.12%	59.30%	46.82%	55.98%	53.52%	36.96%	63.98%	50.31%	39.78%	68.51%
Hispanic or Latino	69.18%	61.88%	56.37%	68.25%	62.44%	55.54%	64.02%	60.31%	50.70%	67.61%
White	59.08%	49.10%	45.39%	61.70%	51.39%	47.93%	58.83%	51.07%	46.50%	60.28%

Retention Rates, by Age



Retention Rates, by Special Populations



	Fall to Spring AY03-04	Spring to Fall AY03-04	Fall to Fall AY03-04	Fall to Spring AY04-05	Spring to Fall AY04-05	Fall to Fall AY04-05	Fall to Spring AY05-06	Spring to Fall AY05-06	Fall to Fall AY05-06	Fall to Spring AY06-07
✱ First-time Degree Seeking	68.13%	43.33%	51.34%	68.40%	61.57%	52.72%	67.68%	46.34%	46.79%	65.37%
Undeclared Major	53.87%	26.55%	39.88%	51.70%	19.55%	37.72%	59.71%	56.75%	53.72%	53.60%
✚ Need-based Financial Aid*	84.27%	70.50%	65.55%	81.34%	93.62%	62.35%	80.85%	68.57%	61.54%	81.02%
✚ Part-time Status	58.23%	52.74%	46.04%	58.66%	51.30%	46.52%	54.17%	50.90%	42.68%	57.12%
✚ Full-time Status	85.18%	77.73%	68.23%	83.66%	72.70%	66.23%	80.54%	71.08%	63.22%	79.64%
✚ Developmental**	73.83%	62.14%	57.54%	69.34%	60.68%	53.84%	67.59%	60.50%	52.36%	70.42%
✚ Limited English Proficient***	73.53%	64.06%	56.38%	73.10%	61.46%	51.79%	70.76%	61.00%	49.24%	68.31%
✚ First Generation	55.70%	36.23%	36.16%	63.62%	52.33%	48.42%	64.25%	55.78%	48.36%	58.07%